

The Princess Margaret
Cancer Foundation  UHN

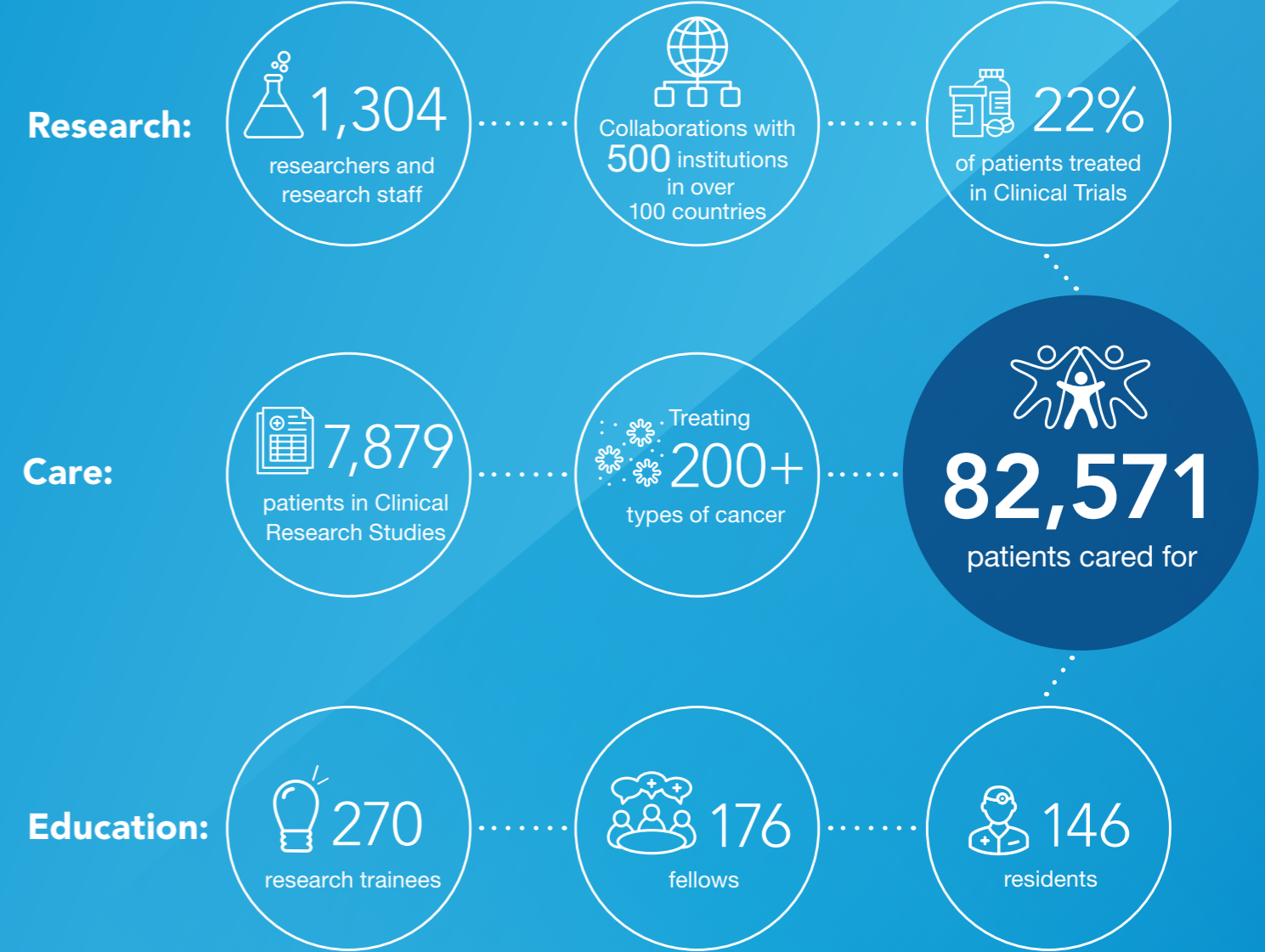
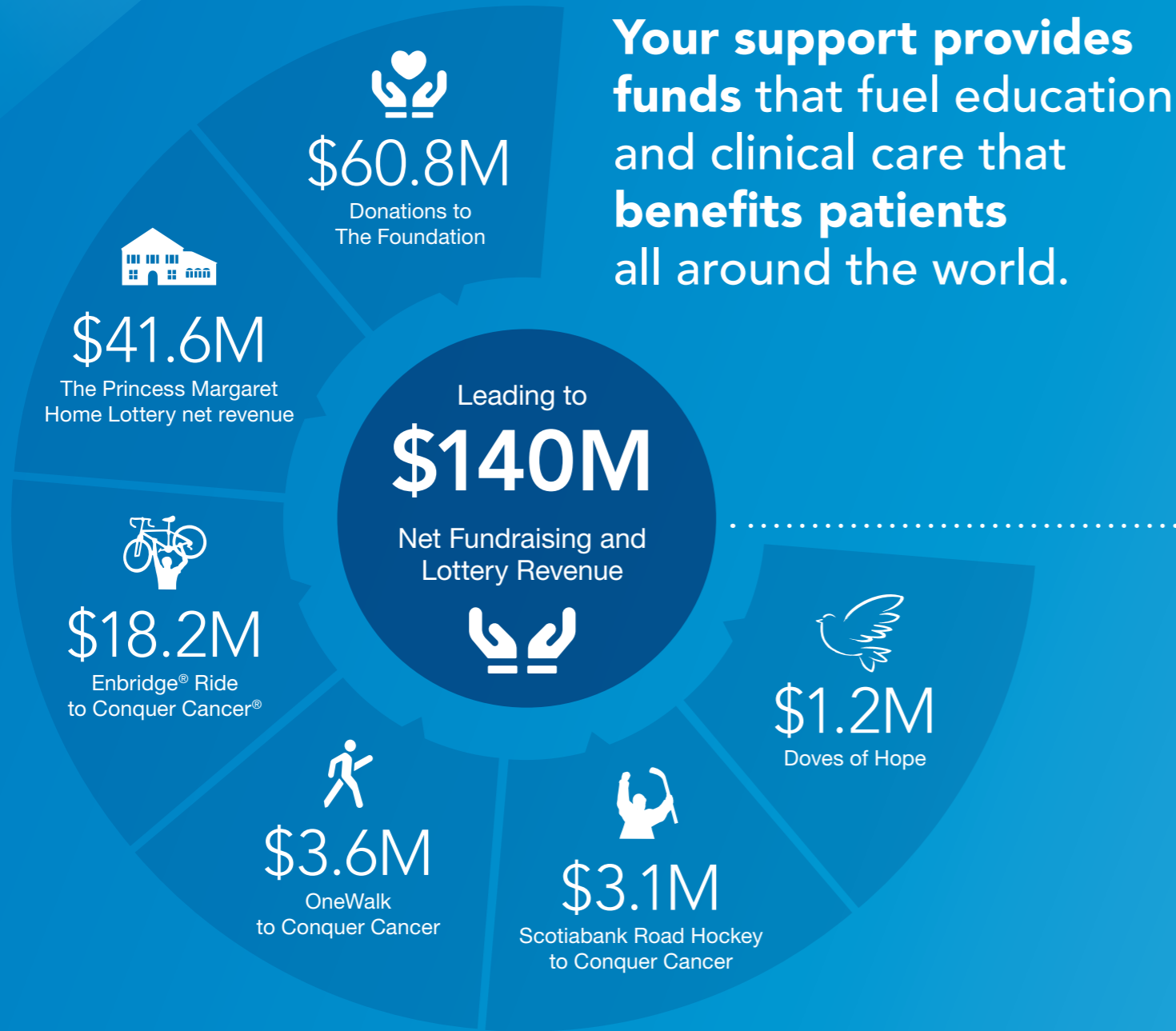
The Courage To Conquer

2020 Annual Report



Patients like Lara inspire
us to continue pushing
the limits of possibility

Read her full story on p. 35



Contents

2020 Annual Report

Message From Our Leaders	4	Invest in Research	20	Board of Directors The PMCF	34
Delivering the Plan	6	Look Who's Leading the Way	21	Lara Brown: Determined to Tell Her Story	35
All Events Lead to the Same Finish Line	8	2020 Year in Review	22	Board Committees	36-37
Michael McCain: Trailblazer	10	Till & McCulloch Society	24	Our Donors	38-49
Hold'em For Life is All-In	12	Sharon Mohip 'Shake the Disease'	26	JCB Grant Society	50-51
Agnico Eagle: Setting the Standard	14	Karen Maidment: Built to Conquer	28	Expendable Funds List	52-53
Thank You, Dr. Mary Gospodarowicz	16	Multiple Myeloma: Moving Together	29	Endowed Funds List	54
Welcome Back, Dr. Keith Stewart	17	Financial Summaries	30	Special Events	55
Key Initiatives	18	Research Chairs	32	Supplier List	56-57
Space Transformation	19	Board of Directors UHN	33		



Message From Our Leaders

History is written at The Princess Margaret. From the identification of the stem cell by Drs. Till and McCulloch in the 1960s to Dr. De Carvalho’s 2017 discovery of a mechanism that could potentially trigger an immune response to fight colorectal cancer cells, we have always been driving innovation. We continue to break down barriers and forge into new territory, despite uncertainties that may lie ahead. We have always had the Courage to Conquer.

Now we are in a new period of history, one full of uncertainty. The unprecedented COVID-19 pandemic has impacted the entire world, bringing with it challenges that none of us expected. But one thing is certain: cancer has not stopped with the spread of COVID-19, and neither will we.

This year we delivered the first phase of our strategic plan, built on the strong legacy and foundation we have in place. Our focus has been positioning our organization to aim higher, reach further, and deliver on our mission to enable *Future Care Now* at The Princess Margaret.

The Princess Margaret Cancer Foundation hit a milestone in 2020, with \$140 million in net fundraising and lottery revenue. We expanded our national and international fundraising partnerships to set the groundwork for broader impact in the years to come, including a \$10 million commitment from Michael McCain to expand the McCain GU (Genito-Urinary) Biobank and a \$2.5 million donation from Maple Leaf Foods that started The Frontline Fund. The Biobank will advance internationally leading

urologic cancer research by providing high-quality specimens and clinical data to researchers here in Canada and around the world. The Princess Margaret Home Lottery also set a new record this year by delivering our largest lottery in history with \$41.6 million in net revenue while The Enbridge® Ride to Conquer Cancer® raised an impressive \$18.2 million. To accompany our Foundation’s fundraising success, we also realized \$29.7 million in returns from our investments in the commercialization of two cancer drugs developed at The Princess Margaret. That money will now be reinvested in research and innovation at our research institute.

Despite our progress, we know that COVID-19 has brought uncertainty and concern. Our Board of Directors remains committed to ensuring that our organization is strong and resilient, with diversified fundraising programs, strong internal operations and robust governance so we can continue to provide our world-leading clinicians and researchers with the resources they need to remain at the forefront of transformational progress. As one of the top 5 cancer research centres in the world, we are relentless in our pursuit of groundbreaking cancer research and innovation.

This year has presented challenges that none of us anticipated, but the funds raised by our programs will move us forward as we write this new chapter in cancer research history. We’d like to thank our donors, volunteers and community members for their dedication, generosity and support. Together, we remain fearless in our Courage to Conquer.

Janice Fukakusa, Board Chair of The Princess Margaret Cancer Foundation and Michael Burns, President & CEO of The Princess Margaret Cancer Foundation

Delivering the Plan to Enable *Future Care Now* at The Princess Margaret

A lot has happened in the past year, around the world as well as here at The Princess Margaret Cancer Foundation. But our mission remains the same: enable *Future Care Now* by raising funds that accelerate cancer research, education and clinical care that benefits patients at Princess Margaret Cancer Centre, across Canada and around the world.

In fiscal year 2020, we delivered the first year of our new Foundation strategic plan – *Strategic Plan 2025: The Roadmap to Enabling Future Care Now*.

We are committed to ensuring that our organization continues to be resilient and positioned for growth, and is the most impactful place a donor can invest for the future of cancer care and research.

Our generous donors deepened their commitment this year to support leading-edge cancer research and care at The Princess Margaret with more than \$60 million in donations to The Foundation. The Princess Margaret Home Lottery set a new record again this year, with the largest lottery in the history of The Foundation, raising \$41.6 million in net revenue. The Enbridge® Ride to Conquer Cancer® raised an impressive \$18.2 million, leading the way to more than \$32.4 million gross revenue across all our events. To accompany our Foundation’s fundraising success, we also realized \$29.7 million in returns from our investments in the commercialization of two cancer drugs developed at The Princess Margaret. That money will now be reinvested in research and innovation at our research institute. With the total net revenue from fundraising, net revenue from the lottery

and commercialization revenue, The Foundation generated a total of \$140 million – our highest net revenue ever.

In addition to delivering on our fundraising programs, our internal focus has been on elevating the fundraising capacity of our organization so we can accelerate groundbreaking cancer research and care. This year we completed a full review of our governance program, began developing new fundraising programs that would create more opportunities for donors to support The Princess Margaret, and delivered critical work that modernizes our internal systems and positions our organization for growth.

We have also recruited new talent, with strong functional expertise and a deep commitment to our mission. We continue to strengthen our team by recruiting leaders from the private and charitable sectors, and we are working to bring greater diversity to our management and Board. Within our Foundation team, 47% of staff are visible minorities and 72% are women; 63% of roles, director and above, are held by women. This diversity brings us significant strength, but we must continue to drive toward greater diversity and inclusion, specifically within senior management and our Board of Directors, and we are committed to championing this in the year ahead.

Finally, we have begun to develop national and international fundraising partnerships to strengthen our impact in global cancer research. This year we announced our partnership with The Marathon of Hope Cancer Research Network, a pan-Canadian network of



Signing ceremony at The Princess Margaret for the collaboration agreement with A.C. Camargo Cancer Center in Sao Paulo, Brazil.

designated research centres that will share knowledge, harness technology and improve collaboration toward finding cures for cancer. We also began discussions with The XPRIZE Foundation, the Davidoff Cancer Centre in Israel, and A.C. Camargo in Brazil, with the objective of developing fundraising projects to support collaborative research and accelerate the global cancer research of our respective organizations.

If the COVID-19 pandemic has taught the charitable sector anything, it is that we must be more resilient to uncertainty and unprecedented events. Charities have long been solely evaluated on their expense ratios, with less consideration for their ability to fulfill their mission and deliver impact over the long-term in partnership with generous donors and supporters. Our Board of Directors has ensured that our organization is well positioned to withstand this shock, and that we can continue to fund ground-breaking research and discovery taking place at The Princess Margaret despite the challenges presented by the pandemic. But

we can't stop there. We will need the sustained support of our donors and volunteers to ensure that sufficient funding exists to continue to create *Future Care Now* as we endure this global pandemic.

Cancer has not stopped because of COVID-19, and neither can we.

We are committed to strengthening our organization to elevate the impact of donor funds at Princess Margaret Cancer Centre and beyond, and we are driven to deliver on our aspiration to become Canada’s most respected charitable foundation where people want to give, work and volunteer.

We continue to believe that the most impactful place in the world that a donor can make an investment in Conquering Cancer is at The Princess Margaret. We thank our donors, volunteers, and community members for their continued support, and for partnering with us to enable *Future Care Now* at The Princess Margaret.

All Events Lead to the Same Finish Line

Together, we can Conquer Cancer In Our Lifetime

We did not become one of the top 5 cancer research centres in the world alone. We got here with the help of our growing community: fearless patients, thousands of world-class doctors and researchers, the loved ones who fill our waiting rooms and the friends that refuse to give up hope.

The vital funds raised through dedicated event participation each year are transformational. They allow us to develop cutting-edge treatments and globally recognized diagnostic tools, continuously fuelling the life-saving research that keeps us all focused on the finish line.

Thank you to our supporters who showed their Courage to Conquer by participating in some of the many events we have available that support The Princess Margaret.



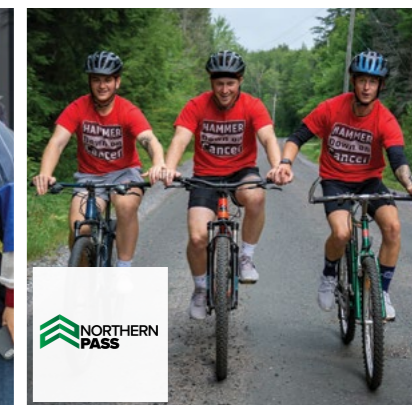
Whether you run or walk 1 km, 3 km or 5 km, you will surely make a difference.
runorwalk.ca



Enbridge® Ride to Conquer Cancer® is two days and over 200 km. We all ride for someone and this is one ride you'll never forget.
conquercancer.ca



For 18 years our community of walkers, including corporate teams from across Canada, have come together to walk as one.
weekendtoconquercancer.ca



This is a cycling adventure built for those who prefer to take the scenic route.
northernpass.ca



Passionate gamers, making a difference while doing what they love.
questtoconquercancer.ca



Thousands play to raise millions in the world's largest road hockey fundraiser, Scotiabank Road Hockey to Conquer Cancer.
roadhockeytoconquercancer.ca



There is no shortage of ways to contribute and a rainbow of colours to brighten somebody's day.
colourtoconquer.ca



Every October, thousands of pink epaulettes are worn to support breast cancer research.
thepmcf.ca/events



Every year thousands of Ontarians purchase a lottery ticket for a chance to win great prizes.
princessmargaretlotto.ca

\$41.6M

Net lottery revenue

\$32.4M

Total events revenue



(Left to right) David Palmer, Dr. James Rutka, Dr. Trevor Young, Meric Gertler, Michael McCain, Dr. Alexandra Millman, Dr. Neil Fleshner, Dr. Kevin Smith and Michael Burns

Michael McCain: Trailblazer

Global progress is often achieved through the leadership of people who come forward to create timely, evidence-based opportunities for the betterment of the entire country. This rings especially true with Michael McCain, CEO of Maple Leaf Foods, whose recent \$10 million donation allowed Princess Margaret Cancer Centre to join forces with researchers at University of Toronto to develop a new landscape in urological health.

The McCain Centre for Urological Innovation and Education opened in June of 2019 and had a groundbreaking first year, thanks to Michael McCain's vision and generosity.

The McCain Centre is a multidisciplinary hub that has already given many highly skilled scientists the tools they need to advance research, training and clinical care while providing long-term support for U of T's Surgeon Scientist Training Program. Within the first

year, this centre along with the world class McCain GU (Genito-Urinary) Bio Bank, has significantly advanced our understanding of the bladder, prostate, kidney and testis.

With Michael's support, we've generated 60 national and international partnerships, hired three surgeon-scientist trainees and submitted several significant grant applications to help explore new discoveries that will help patients that are affected by urological disease.

To further accelerate this research locally, the McCain GU Biobank, in collaboration with UHN, established PRESERVE (Pandemic RESponse), UHN's first biorepository for specimens from patients diagnosed with the new coronavirus. The samples collected provide valuable insights into key aspects of the disease while aiding with detection, prevention and treatment. These samples will be housed indefinitely to enable future research studies.

\$2.5M Donation from Maple Leaf Foods Seeds New Fund to Support Frontline Hospital Workers Across Canada

In March, as COVID-19 shut down the entire global economy and put a tremendous amount of pressure on Canadian healthcare systems, crucial supplies, support and research funding quickly became scarce. Maple Leaf Foods boldly stepped up to offer support with a new fund that has inspired thousands of others to follow suit.

The Frontline Fund was launched in April, when Maple Leaf Foods and its CEO, Michael McCain, brought The Princess Margaret Cancer Foundation together with hospital foundations across Canada. The national fund was established with the help of CanadaHelps to give corporate Canada and individual Canadians an opportunity to help protect frontline workers and deliver the many tools needed to help address the COVID-19

public health emergency. The coast-to-coast collaboration quickly became a one-stop solution for all Canadians who wanted to help, and Maple Leaf Foods set the bar high with a generous \$2.5 million donation. To date, the fund has raised more than \$11.5 million and helped support more than 140 hospitals across the country.

The Frontline Fund has provided many of the essential tools Canada's healthcare workers desperately need, while accelerating the use of technology to enable virtual patient care. It helps many of the nation's leading hospitals conduct clinical drug trials and develop potential vaccines. In addition, it offers peer-to-peer support as well as hospital-adjacent hotel rooms for exhausted frontliners battling the crisis.



(Left to right) Meric Gertler, Dr. Trevor Young, Michael Burns, Dr. Alexandra Millman, Michael McCain, Heidi Wagner and Dr. Neil Fleshner



(Left to right) Tom Ehrlich, Tony Reale, Craig Walters, Dr. Neil Fleshner, Matthew Frieberg, Jonathan Gitlin, Michael Turner and Andrew Hoffman

Hold'em For Life is All-In

The Princess Margaret attracts hundreds of bright minds from all over the world who strive to become world leaders in cancer care. Our ability to nurture this upcoming generation of global cancer leadership is only possible through affiliation with events like Hold'em For Life.

The Hold'em For Life Charity Challenge, entirely volunteer-run, is an exclusive opportunity for business leaders to get together and play in a complete Monte Carlo-style poker tournament while contributing to life-saving cancer research.

This year, Hold'em went all-in and reinforced their commitment to fostering our academic community by donating a transformational \$16 million to research across GTA hospitals through the Hold'em For Life

Oncology Clinician Scientist Award Fellowship. \$10 million of which directly supports progress here at Princess Margaret Cancer Centre. This initiative will propel the future of cancer research forward by securing 40 clinical fellows each year.

This program is currently open to all University of Toronto's clinical residents and fellows who may be pursuing a career in cancer research at any of U of T's nine affiliated hospitals, including The Princess Margaret and Mount Sinai Hospital. Funds are then matched dollar-for-dollar by the institution in which the fellow resides, quickly doubling down on impact. To date, many promising young researchers have already produced significant advancements in new treatments while expanding our understanding of response and resistance.

Congratulations to the following 2020/2021 Hold'em For Life fellows at Princess Margaret Cancer Centre:

Abi Vijenthira

The Gerald Schwartz & Heather Reisman Foundation Hold'em For Life Oncology Fellow



Project: Application of the generalizable frailty Index using population-based health administrative data

Gregory Nason

CentreCourt Hold'em for Life Oncology Fellow



Project: Comparison of OpeN VERSus RoboTic (CONVERT) Partial Nephrectomy Trial—a feasibility randomized control trial

Irene Xie

CIBC Capital Markets Hold'em for Life Oncology Fellow



Project: Identifying molecular vulnerabilities in pancreatic cancer

Keegan Guidolin

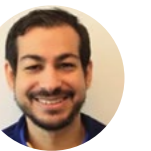
CMCC/Atrium Hold'em for Life Oncology Fellow



Project: Porphyosomes for the intraoperative visualization of colorectal lymph node metastases

Khaled Ramadan

Silverberg Hold'em for Life Oncology Fellow



Project: Photodynamic therapy during in vivo lung perfusion for treatment of lung metastases

Lucy Liu

Onex Hold'em For Life Oncology Fellow



Project: The effect of intestinal microbiome on development of malignant bowel obstruction in advanced gynecologic malignancies

Paulo Kayano

CBRE Hold'em for Life Oncology Fellow



Project: Impact of proton pump Inhibitors on prostate cancer diagnosis and outcomes

Robert Grant

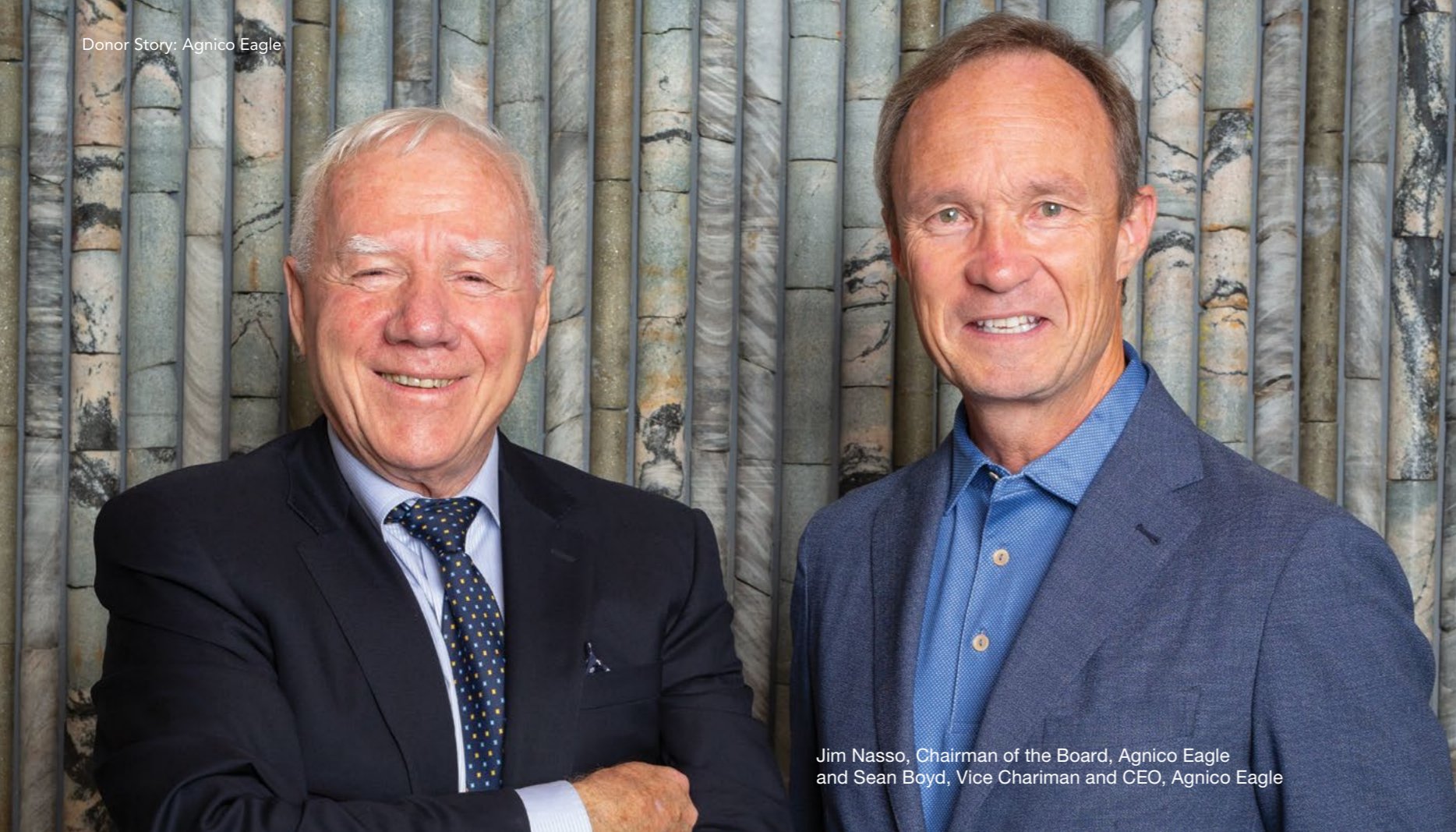
SmartCentres Hold'em for Life Oncology Fellow



Project: Predicting outcomes in pancreatic cancer from clinical and genomic data using machine learning

The support from the Hold'em team invites a breadth of knowledge into the Cancer Centre, while advancing the next generation of breakthroughs for doctors and researchers at The Princess Margaret. Their generosity has been a catalyst for many studies that have the potential to change the world, while giving 40 of the brightest young minds in medicine a reason to call Toronto home.

They don't just invest in research, they invest in the people who make our institution one of the top 5 cancer research centres in the world and will no doubt leave a lasting impression on the future of oncology. We thank the entire Hold'em For Life organization for the monumental role they continue to play in leading the way.



Jim Nasso, Chairman of the Board, Agnico Eagle
and Sean Boyd, Vice Chairman and CEO, Agnico Eagle

Agnico Eagle: Setting the Standard for Corporate Responsibility

Each year we break new ground in research and patient care thanks to the steadfast support of socially conscious Canadian companies like Agnico Eagle, that continue to give back while driving innovation forward.

For close to 25 years, Agnico has been setting the standard for corporate responsibility. Not only has the leadership team made socially and environmentally sound decisions a priority in the lives of their employees and communities, but they also remain committed to a

vision that is shared by all of us: to Conquer Cancer In Our Lifetime. And thanks to a new \$5 million gift, our world-class clinicians are currently running the number one immunotherapy program in the country, changing the way many cancers are treated around the world.

This isn't just another fundraising initiative to Agnico. It's personal. And it began in 1996 with Agnico Eagle founder Paul Penna, whose philanthropic spirit instilled a systemic and proactive approach for the

entire organization. From that point on, many senior executives and board members who support The Princess Margaret—including Sean Boyd, Jim Nasso, Ammar Al-Joundi, Robert Gemmell, and David Smith—have become champions of corporate engagement, confident that their support will leave a lasting impression on a global stage.

“We are very fortunate to have The Princess Margaret, a globally recognized leader in cancer research and cancer care. This creates a tremendous opportunity for businesses in Canada to support world-class researchers and doctors with breakthrough discoveries and innovative treatments.”

—Sean Boyd

The Agnico team continues to help drive cancer care forward on many levels, not only through direct corporate giving, but also consistent personal philanthropic support, as well as fundraising with employees who volunteer their time to many of our events. In 2009, the Agnico team initiated an annual charity golf tournament that continues to raise over \$200,000 each year in support of The Princess Margaret's Head & Neck program. And the 'Women in Mining' team raises crucial funds every year through participation in OneWalk to Conquer Cancer. To take their commitment one step further, Jim Nasso took to the stage in 2018 for Humour Me, an evening comedy event benefitting The Princess Margaret.

Vice Chairman and CEO Sean Boyd has served on The Princess Margaret Cancer Foundation Board of Directors for a number of years. He and his wife Peta

are generous donors and Sean continues to provide leadership across many Foundation initiatives. His input was instrumental in helping us achieve our Billion Dollar Challenge. Sean initiated the very first 'Gold Bar Challenge' in which Agnico donated \$600,000 in gold to the Liquid Biopsy Program while encouraging other gold companies to do the same. Collectively, they have invested just over \$3.2 million and significantly advanced our approach to early cancer detection.

In 2016, Agnico announced a critical \$5 million investment in immunotherapy research. This donation helped fund 27 clinical studies, 18 of which were investor-initiated and nine that were geared towards understanding the microenvironment of the tumour and immune response. Since more than half of the clinical trials at The Princess Margaret in the last two years have involved immunotherapy, this gift has helped us revolutionize the ways many cancers are treated and is already saving and prolonging the lives of patients who otherwise would have been lost to cancer.

Agnico Eagle shares our belief that corporate social responsibility should not be a choice, but rather an essential part of any business strategy to meet the needs and expectations of all stakeholders. As businesses look to prioritize their social investment opportunities, they are undoubtedly focused on where they can have the greatest impact. As one of the top 5 cancer research centres in the world, we believe The Princess Margaret is the best place in the world to invest in the future of cancer care benefiting patients both locally and around the world.

We are deeply grateful for the ongoing support of Agnico Eagle and its employees. With corporate partners who follow the Agnico lead, we will Conquer Cancer In Our Lifetime.

Thank You, Dr. Mary Gospodarowicz

This May marked the end of an era as Dr. Mary Gospodarowicz, Medical Director of Princess Margaret Cancer Centre, stepped down after 15 years of leadership.

Over the course of her time in this monumental role, Dr. Gospodarowicz helped elevate the national and global prestige of this institution. She has vastly increased the ability to deliver outstanding care to thousands of patients, was instrumental to advancing many areas of clinical research, and was the voice of The Princess Margaret on many of the biggest stages in the world. Her influence helped to shape cancer care and public policy here in Canada and across the globe.

During her tenure, Dr. Gospodarowicz helped to establish the Young Leaders in Cancer Program for UHN, which supports and develops emerging leaders in the global cancer community. She was the first Canadian President of the Union for International Cancer Control (UICC) and in this role, created a Global Task Force on Radiotherapy for Cancer Control (GTFRCC) that later became the Lancet Oncology Commission on Radiotherapy for Cancer Control.

In addition to all of Dr. Gospodarowicz's accolades and awards, she is also respected for her humanity, generosity and kindness, over the years forging incredible bonds with donors, her patients and their families. Dr. Gospodarowicz was engaged in our fundraisers and served on our Board of Directors for 15 years.

Dr. Gospodarowicz was an advocate for all sides of patient care and the heart behind many big milestones, including a \$50 million Space Transformation and the record-setting Billion Dollar Challenge. Dr. Gospodarowicz believed that The Princess Margaret could be the very best cancer centre in the world and worked tirelessly to facilitate *Future Care Now*.

Thank you for your incredible legacy, Dr. Gospodarowicz! Your work will continue to inspire many bright minds here in Canada and around the world, well into the future.

Welcome Back, Dr. Keith Stewart

Princess Margaret Cancer Centre welcomes back renowned multiple myeloma clinician and researcher, Dr. Keith Stewart.

This year, Dr. Stewart rejoined as Medical Director of the Princess Margaret Cancer Program, Vice President, Cancer, UHN, and Regional Vice President, Toronto Central South Regional Cancer Program, Ontario Health (Cancer Care Ontario).

Dr. Stewart began practicing at Toronto General Hospital (TGH) in 1992, subsequently moving his clinical practice to The Princess Margaret in 1999. While at UHN, he became the first Research Director at TGH, began the University of Toronto McLaughlin Centre for Molecular Medicine, and conducted the first viral gene therapy clinical trials in Canada.

UHN prepared him well for the move to the Mayo Clinic in 2005, where he was the Director of the Mayo Clinic Center for Individualized Medicine. This center focuses on genome-based research and clinical implementation, customizing care to a patient's unique genetic makeup.

As a scientist, Dr. Stewart has more than 25 years of sustained national funding for a laboratory research program in genomics and biology of multiple myeloma, and has led many clinical trials of new drugs for this blood cancer.

Dr. Stewart stresses that cancer care for generations to come will require a fearless vision: detecting cancer early while it is still curable; developing high-definition, precision treatments to replace outmoded treatments with debilitating side effects; using Artificial Intelligence

to discover unexpected links and patterns within cancer for better detection; and creating comfort and confidence for both staff and patients.

He hopes that he can help streamline cumbersome administrative practices and support staff who could better spend their time with patients, reflecting on their next projects, building strong, diverse teams and practicing wellness.

Congratulations and welcome back, Dr. Stewart!





Looking Back and Moving Forward: Cancer Centre Key Initiatives

Princess Margaret Cancer Centre launched a new strategic plan in 2019, *Future Care Now: Create Cancer Care for 2030*. A plan designed to ignite new paths in discovery and maintain a strong global momentum in care. Several key programs were built to achieve this goal, two of them being The Princess Margaret Data Science Program (PMDSP) and the Global Cancer Program.

The Princess Margaret Data Science Program leverages multidimensional, high-quality data to gain a deeper understanding of complex cancers. The progress made in computerization and data science allows the team to utilize rich data assets to identify effective therapies, predict outcomes and prevent toxicities. This innovative program was built to breed cross-specialty collaboration by utilizing a group of diverse data sources to fuel learning and help uncover previously undetectable trends in cancer care.

The program is co-led by a diverse and distinguished group of cancer experts, including Tran Truong, Program Director, Dr. Benjamin Haibe-Kains, Scientific Lead, Dr. Alejandro Berlin, Clinical Lead, and Luke Brzozowski, Partnership Lead.

“We are at a point where the dimensionality of the data collected exceeds by far what the human brain can grasp. The development and adoption of new computational tools will be crucial to assist clinicians and researchers in their work.”

—Dr. Alejandro Berlin

The Global Cancer Program, directed by Dr. Danielle Rodin, was established to ensure cancer care is available to patients, families and communities throughout the world. Serving as an international hub to discuss leading research surrounding the many economic and social factors that influence treatment. The program will continue to forge dynamic international partnerships and will soon be hosting leaders from across the country to further define Canada’s role in global oncology. “We share our knowledge, yes, but we also learn about new models of care and how to be nimble from our international partners,” says Dr. Rodin.

These are just two key initiatives that continue to set The Foundation up for long-term success and allow the scientists and researchers at The Princess Margaret to unleash their unlimited potential.



The new Magic Castle is a safe place for kids to play while parents or caregivers receive care at The Princess Margaret.

To Transform Cancer Care Around the World, We Had to Start Here

Four years ago, we embarked on our most ambitious renovation to date. A \$50 million space transformation that was consciously designed to improve and empower the lives of everyone who visits Princess Margaret Cancer Centre. And while COVID-19 did not come without its set of unique challenges, we are proud to report we are moving ahead as scheduled.

We have opened our fully renovated blood lab, outpatient pharmacy, cancer education centre and several new comfortable lounges throughout the main floor to improve the patient experience on each visit to the Cancer Centre.

The bright and timely revitalization will support families as they take their healing journey together and encourage confidence at each stop along the way.

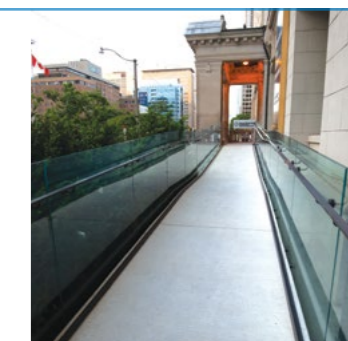
We were designed to serve only 7,000 new patients a year and have since evolved into a trusted global care leader, with close to 20,000 new patients annually. This state-of-the-art transformation is part of a multi-phase capital redevelopment plan for the Cancer Centre. With an expansion of our cellular therapy program and renovation of several clinics on the horizon, our work to transform the Cancer Centre will be completed over the next few years. We will continue to enable *Future Care Now* through all areas of the Cancer Center and learn from every patient experience.

A Thank-You That Will Last a Lifetime

By supporting this space transformation, your impact will be realized for decades to come by the hundreds of thousands of people from all over the globe.

Yamana Gold: Making an Entrance

This year Yamana Gold elevated their long time support of The Princess Margaret with a \$1 million gift to the space transformation campaign. This generous gift has funded the new Accessibility Entrance on University Avenue, and will allow all patients and families safe passage into the newly renovated cancer centre. We thank Yamana Gold for their continued support of research and care at The Princess Margaret.



Stand on the Forefront of Innovation

Invest in Research

Our researchers and scientists demonstrate the Courage to Conquer by challenging traditional thinking to create the future of cancer care. Their work spans the cancer continuum from early diagnosis, to the development of new drugs and therapies, to improving the experience of living with cancer—but without seed-funding, many of these ideas can stall.

All advancements in research have the potential to yield immense impact, but what is unique about this program is that it funds higher risk research that has the potential for much higher rewards. These generously allocated grants fund many early stage, high risk ideas that lack traditional means of funding. Thanks to our donors, each year two grant recipients receive \$100,000 to embark on their bold and innovative ideas through the support of the Invest in Research program.



“This program provides an important opportunity to collaborate and test new ideas that can lead to extraordinary insights and discoveries. When we invest in research we invest in our patients, and our people.”

—Dr. Aaron Schimmer, Director of Research, Princess Margaret Cancer Centre

Ready to Invest? Contact Karina Wong, Manager, Leadership Giving, karina.wong@thepmcf.ca or 416-946-6560 | Learn more about the impact of seed-funding at: thepmcf.ca/investinresearch

Donors not only get to fuel cutting-edge cancer care with the potential to save lives around the world, but all donors are then invited to come together and work directly with some of the brightest minds at The Princess Margaret to vote on which project they believe will have the greatest impact in the fight against cancer. Through this exclusive voting process, it is decided which research initiatives will receive one of these prestigious grants.

These projects are not incremental, but exponential, and have the potential to change the cancer game for decades to come.

Thanks to donor support, Drs. Marianne Koritzinsky and Phedias Diamandis have both received funding this year to support their high-risk, high-reward research. Dr. Koritzinsky is leading a project which aims to better understand the biology underlying pancreatic cancers, while Dr. Diamandis is working to develop new drugs that will be used to treat highly aggressive brain cancers. Through the power of donor commitment, the Invest in Research program has raised more than \$2 million to date and the subsequent initiatives have secured \$36 million of additional funding for new discoveries.

To date we have funded 22 projects, each one holding promise that is helping us create *Future Care Now* at The Princess Margaret.

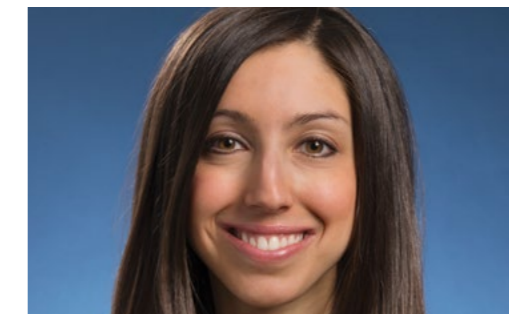
Look Who's Leading the Way

The Till & McCulloch Paper of the Year Award winners are selected from nominees who exemplify the breadth and quality of research being done at The Princess Margaret. Congratulations to our 2019 winners!



(Basic Science)
Dr. Housheng Hansen He, PhD
Senior Scientist,
Princess Margaret Cancer Centre

A rarely studied type of genetic material—known as circular RNA—has been revealed to be prevalent in prostate cancer. Dr. He and his team used ultra-deep sequencing to define the circular RNA present within 144 tumours and identified over 76,000 circular RNAs—more than 30,000 of which had not been previously described. They also found that the most aggressive types of prostate cancer tended to have abnormal production of circular RNAs and that a subset of circular RNAs are important for tumour growth, making them potential targets for RNA-based therapies. They are now testing whether circular RNAs can serve as markers to help diagnose prostate cancer earlier and predict whether it will come back or spread.



(Translational)
Dr. Danielle Rodin,
MD, MPH, FRCPC
Clinician Investigator,
Radiation Oncologist,
Princess Margaret Cancer Centre

More than half a million women are diagnosed with cervical cancer each year, and the prevailing ideology has been that HPV vaccinations will eliminate the need for significant investment. Dr. Rodin and her team conducted a study on the benefits of external beam radiotherapy and brachytherapy. They found that by 2035, radiotherapy scale-up would save 11.4 million life-years. Their report is the first coordinated cervical cancer strategy that combines both prevention and treatment and is now being used to advocate for the inclusion of radiotherapy globally. A treatment target (90% access to cervical cancer treatment worldwide) was in the draft resolution being ratified at the World Health Assembly in Geneva in May 2020.



(Clinical)
Dr. Thomas Kislinger, PhD
Senior Scientist,
Princess Margaret Cancer Centre

Prostate cancer is the most common non-cutaneous tumour in men but has minimal targeted therapies available. As a result, it remains an urgent research priority to identify candidate drug targets and molecular biomarkers while tumours are still curable by local therapy. Thomas Kislinger and his team published the first comprehensive proteogenomic analysis of prostate cancer, which merges complete understanding of a tumour's genome with how that genome becomes expressed into functional proteins. The work of Kislinger and his team, in collaboration with the Boutros lab at UCLA, will serve as a platform for hundreds of other studies, contains several key findings and is the first study that directly quantifies the utility of multi-omic markers in any type of tumour.

2020 Year in Review



PRINCESS MARGARET HOME LOTTERY TO CONQUER CANCER

2020 FERRARI PORTOFINO

OFFICIAL FERRARI DEALER
Ferrari of Ontario
Ferrari of Toronto

01

The year has been full of hard work, passion, grief and hope. We came together to raise funds that accelerate cancer research, education and clinical care benefiting patients at Princess Margaret Cancer Centre, across Canada, and around the world.

We'd like to celebrate some of the many ways our donors supported The Princess Margaret Cancer Foundation over the year.



02



03



04



05



06



07



08



09

- 1. Fall 2019 Home Lottery winner, Maxine Ng | 2. Margaret + George do La Dolce Vita | 3. Doves of Hope | 4. Enbridge® Ride to Conquer Cancer® | 5. Team Multiple Myeloma - Journey to Conquer Cancer | 6. The Michelangelo Cup | 7. Behind the Scenes Event | 8. Scotiabank Road Hockey to Conquer Cancer | 9. A1 Radiothon

Thank you to everyone for supporting our vision to Conquer Cancer In Our Lifetime.



Till & McCulloch Society

The Princess Margaret Cancer Foundation

The Till & McCulloch Society was created to recognize supporters who have cumulatively contributed \$1 million or more to advance cancer research and care at Princess Margaret Cancer Centre.

Founded in 2015, this Society is named in honour of Dr. James Till, a biophysicist, and Dr. Ernest McCulloch, a haematologist – researchers who pioneered stem cell science when they discovered the blood-forming stem cell at The Princess Margaret in the 1960s. This seminal work subsequently led to the advancement of many other discoveries in medicine such as bone marrow transplantation.

Like these remarkable scientists, members of the Till & McCulloch Society, through their significant financial contributions, have helped accelerate cancer research and care solidifying The Princess Margaret as one of

the top 5 cancer research centres in the world. We are grateful to all of the individuals, corporations and foundations listed for their vision and passion to help Conquer Cancer In Our Lifetime.

To honour their tremendous support, members of the Society have the opportunity to attend exclusive events with Cancer Centre leadership, and they are the first to receive updates and information.

In late November of 2019, the Till & McCulloch Society were invited to an intimate cocktail reception hosted by Janice Fukakusa, Board Chair, and Michael Burns, President & CEO. The evening's conversation centred around new discoveries and cutting-edge research while featuring some of the brightest minds in cancer care: Dr. Aaron Schimmer, Research Director, Princess Margaret Cancer Centre, Dr. Stéphanie

(Left to right)
Andy Asher,
Pippa MacDonald
and Michael Burns



Lheureux, Gynecology Site Lead, Dr. Brian Raught, Canada Research Chair in Proteomics and Molecular Medicine and Dr. Catherine O'Brien, Gastrointestinal Surgeon-Scientist.

We gratefully acknowledge the Till & McCulloch Society for their support and commitment to improve care and advance cancer research at Princess Margaret Cancer Centre.

For more information about the Society, please contact Christine Brown at christine.brown@thepmcf.ca | 416-946-6560



Janice Fukakusa, Board Chair,
The Princess Margaret Cancer Foundation

Till & McCulloch Society*

Daniel C. Andreae
Andrée Rhéaume and Robert Fitzhenry Family Foundation
Susan and Murray Armitage
AstraZeneca Canada Inc.
The Atkinson Charitable Foundation
The Bhalwani Family
Molly and David Bloom
BMO Financial Group
Boehringer Ingelheim (Canada) Ltd.
Maggie Bras and Family
David and Paula Butterfield
CARA Operations Limited
Family of Haji Usman Dawood Choksi
CIBC
John and Myrna Daniels
Bob Dorrance & Gail Drummond
Sherry and Edward Drew
The Elia Family
The Elizabeth and Tony Comper Foundation
Joyce and Philip Epstein
Graham Farquharson
FDC Foundation
Gordon and Donna Feeny
Front Street Capital Charitable Foundation
Janice Fukakusa and Greg Belbeck
Bruce Galloway
Myron and Berna Garron
Ther Gerald Schwartz & Heather Reisman Foundation
Peter and Shelagh Godsoe and Family

Mitchell Goldhar
Greenpark Group
The Gucciardi Family
Giovanni & Concetta Guglietti Family
Hoffmann-La Roche Ltd.
Hold'em for Life Charity Challenge
I.U.O.E. , Local 793
The Jack Weinbaum Family Foundation
Janet D. Cottrelle Foundation
Jesse & Julie Rasch Foundation
The Allan and Ruth Kerbel Family
Neville and Lorraine Kirchmann
The Lewitt Family Foundation
Lilly
Longo's Family Charitable Foundation and Longo Brothers Fruit Markets Inc.
Jon and Nancy Love
Ronald MacFeeters, Sheila MacFeeters, Laura MacFeeters and Elizabeth Hamilton
John and Gail MacNaughton
Tak Mak Family
Lynn and Robert G. Matthews
Margaret and Wallace McCain
Merck Canada Inc.
The Michael Young Family Foundation
Nadir and Shabin Mohamed Foundation
The Norman and Marian Robertson Charitable Foundation
The O'Neil Foundation
Pancreatic Cancer Canada Foundation
Joan W. Parkes

Nancy Pencer and Family
Pfizer Canada Inc.
The Posluns Family Foundation
RBC Foundation
Nita and Don Reed
RioCan REIT
Richard Rooney and Laura Dinner
Larry Rosen and Susan Jackson
S.O. Asher Consultants Ltd.
The Samuel Family Foundation
Scotiabank
Etta and Shiri (Shri) Shastri
Shoppers Drug Mart
Allan Slight and Emmanuelle Gattuso
Slight Family Foundation
The Strobele Family
Kevin and Sandra Sullivan
Joey and Toby Tanenbaum
Tauba & Solomon Spiro Family Foundation
Joan and Ken Taylor
TD Bank Group
J.W. Nevil Thomas and Family
Edward G. Thompson and Family
Fred and Vicki Tomczyk
Tony and Wendy Traub
Warren-Connelly Families
The WB Family Foundation
The Westaway Charitable Foundation
Robert and Gerardina Wharton and Family
Anonymous (9)

*Names appear with express permission received from the donor

Sharon Mohip: Forever Helping to 'Shake the Disease'

Sharon participated in her first 60 km, two-day walk supporting The Princess Margaret to honour her best friend's mom back in 2008, on a team now called 'Shake the Disease.' The energy of the community kindled a lasting commitment, and for the following decade, Sharon continued to participate in OneWalk to Conquer Cancer while raising funds for many different areas of cancer research. However, it wasn't until 2017 that her reasons for participating really hit home. That fall, Sharon's mother, Parbattee, experienced a shortness of breath along with a cough that just wouldn't go away. Her family doctor discovered fluid around her lungs and upon the preliminary diagnosis, at the family's request, immediately referred her to the lung clinic at The Princess Margaret where Sharon's family received a diagnosis that was very hard to digest. Parbattee had stage four metastatic lung cancer.

Parbattee started treatment immediately, under the care of Dr. Frances Shepherd. "We were so lucky to have had her," Sharon said. "She was my utopian pick and beyond the outstanding resume, she was the right mix of personality and presence for my mom, for our family." Sharon was grateful for the open and honest approach of the lung clinic and appreciated that she was always able to get answers. "Dr. Shepherd had no problem laying it on



"We were so lucky to have Dr. Shepherd. Beyond the outstanding resume, she was the right mix of personality and presence for my mom, for our family."

—Sharon referring to Dr. Frances Shepherd

the line for us. Even if someone is going to shed a tear or two, she knows when to lay the cards down."

In early 2019, the cancer metastasized and moved from the lungs to the brain. Parbattee then shifted through several different specialties within The Princess Margaret, including neurology, radiation and eventually, palliative care. "Chemotherapy kept her stable for about 15 months, but once it moved to her brain things went very quickly," Sharon said.

In March of 2019, after a year-and-a-half long battle with cancer, Parbattee passed away peacefully in her sleep. Sharon says that the sincerity from the entire team at The Princess Margaret helped her and her family make some very tough calls along the way. And for that she is forever grateful. "They always looked past the illness and into the person," Sharon said. "When you really see it in action, the personalized treatments,

the level of care, it really validates the effort you put into fundraising."

Sharon and her father, Anthony, have both left legacy gifts to The Princess Margaret in their wills and she plans to continue fundraising until someone says she can't. "It is one of the top 5 cancer research centres in the world; we know it will continue to make an impact on a global level."

**Membership in the
JCB Grant Society is offered
to donors who have included
The Princess Margaret in their will
or have made a gift of life insurance.**

**For more information, contact Genane Peniak,
genane.peniak@thepmcf.ca or 416-946-6560.**

Karen Maidment: Built to Conquer

In 2007, Karen Maidment, a successful CFO and mother of two, looked into her office mirror and noticed her face was swollen. She thought it might be an allergic reaction but quickly found herself in the ER. Karen had an aggressive form of Non-Hodgkin's Lymphoma—and like many others, was diagnosed without warning. She spent close to a year at The Princess Margaret undergoing chemotherapy and radiation while everything else came to a screeching halt. It was the fight of her life and fortunately, it was successful.

During treatments, a clinical trial piqued Karen's interest in medical research. "The feedback loop between clinic and research is strong; it continually turns and flows. I think that's why The Princess Margaret has made so much global progress," she said. In 2009, wanting to give back, Karen joined The Foundation's Board of Directors. "The Board is made up of an outstanding group of people. I've served on many NFP boards in my time, but every single person here has a real determination and a singular focus: Conquer Cancer."

While working to regain strength, a friend challenged her to participate in the Enbridge® Ride to Conquer Cancer®—a 200 km ride from Toronto to Niagara Falls in support of The Princess Margaret. "I haven't ridden a bike in 40 years!" Karen replied. On the first day of training she made it past three houses, and then around the block, and eventually, with the support of her family and a few close friends, she completed her first official Ride. She recalls every kilometre (and the heat) like it was yesterday.



Karen Maidment with her Enbridge® Ride to Conquer Cancer® team

"I remember thinking, I'm never doing this again," she laughed. But in 2019, when her term on the Board was coming to an end, she decided it was time to get back on the bike and make Ride history with a fundraising goal of \$500,000.

The support of Karen's family strengthened her resolve and the pitch was simple: "Your money is not going to a Toronto cancer hospital. It's going to a global cancer leader that is making world-class advances in cancer care." 'Team Karen' raised an astonishing \$590,000.

She remembers having a discussion with Dr. Mary Gospodarowicz about where the funds could make the greatest impact, and she was then introduced to Dr. Alejandro Berlin, head of our Smart Cancer Care program. This burgeoning program uses the best in digital technology and specialized software to streamline delivery of virtual care. And while COVID-19 put many initiatives around the world on hold this year, an urgent need to keep our patients safe meant the Smart Cancer Care program was kicked into high gear. In just 11 days, the Smart Cancer Care team designed and launched a new system that enabled virtual visits, keeping patients connected to loved ones far and wide while reducing over 500 in-person visits per day. This was all possible due to the generosity of our donors and participants, like Karen, who helped fund this important initiative.

We'd like to thank Karen for her longstanding commitment to our mission and for seed-funding a dramatic shift in how we deliver *Future Care Now*.

Multiple Myeloma 5K (MM5K): Moving Together Toward the Cure

The Journey to Conquer Cancer brings thousands together each year with a shared vision to Conquer Cancer In Our Lifetime. One team that helps keep that dream alive is Multiple Myeloma: *M-Moving Together Toward the Cure*.

This year marks 16 years of determination for this renowned group of Multiple Myeloma benefactors, assembled by Cindy Leder, who got involved with the Cancer Centre when husband, Harley Ulster, was diagnosed. Cindy's passion for the cause is contagious and has inspired many others who have been personally affected to join.

One of those inspired by Cindy was Sass Khazzam, who jumped on board in 2015, after wife Sharmeen was diagnosed. He hit the ground running because he knows the funds raised will continue to make a difference for so many. "There is no cure, but my wife is benefiting from the fundraising and research that has been done to date. She will live longer than someone who may have been diagnosed 10 years ago because families back then planted a seed. And in order to conquer this disease we need to keep going."

In addition, Molly Bloom joined, whose husband David had connected with Cindy after being diagnosed. "Cindy is an advocate like I've never seen in my life," she said. When David Bloom succumbed to Myeloma complications in 2016 it only stoked the team's fire for fundraising. "We will do whatever we have to do to support this research. I made a promise to David that I would continue to help find a cure," Molly said.

The MM5K committee is passionate about fundraising for this treatable but still incurable blood plasma cancer and has raised a cumulative \$8 million to date for Myeloma research, making it the largest fundraiser for Multiple Myeloma Research in Canada.

These funds have contributed to research and treatment, as well as establishing The Molly and David Bloom Chair, the very first Multiple Myeloma Chair in Canada. This chair, held by Dr. Donna Reece, has given The Princess Margaret an opportunity to explore new research avenues, develop drugs that lengthen remissions and ultimately, new ways to extend the lives of those living with this disease while offering the best care possible.

It is estimated that in 2020, roughly 3,400 Canadians will be diagnosed with Multiple Myeloma and 1,600 Canadians will die from it. We are extremely grateful to be walking with MM5K year after year, toward a cure and thank everyone on the team for their dedication.

The Chase's Cheerleaders team



Financial Summaries

5-Year Overview

Each year, The Princess Margaret Cancer Foundation reports on the funds it raises and stewards in two ways: via Audited Financial Statements (AFS) online at www.thepmcf.ca, and via the standard CRA T3010 form required of all not-for-profit organizations and found on the CRA website at canada.ca/en/services/taxes/charities.html. While both formats utilize the same financial information, The Foundation's AFS provides a more detailed look to better assess and control our financial performance.

Statement of Revenue, Expenses and Changes in Fund Balances (\$ Thousands)

Year ended March 31	2016	2017	2018	2019	2020
Gross Fundraising Revenue	95,815	95,202	98,590	91,822	122,861
Direct Fundraising Expenses ¹	(16,793)	(14,990)	(16,237)	(21,998)	(24,434)
Net Fundraising	79,022	80,212	82,353	69,824	98,427
Gross Lottery Revenue	70,947	72,334	78,897	88,239	102,904
Direct Lottery Expenses	(46,153)	(44,640)	(49,170)	(54,627)	(61,322)
Net Lottery	24,794	27,694	29,727	33,612	41,582
Net Fundraising and Lottery Revenue	103,816	107,906	112,080	103,436	140,009
Investment Income (Loss)	(1,660)	45,006	31,561	36,964	(5,153)
Net Revenue, including Investment Income	102,156	152,912	143,641	140,400	134,856
General Fundraising and Administrative Expenses ²	10,724	11,287	12,467	9,603	9,743
Excess of Revenue over Expenses before Grants	91,432	141,625	131,174	130,797	125,113
Grants to Princess Margaret Cancer Centre					
Building	3,048	3,724	8,552	9,635	8,661
Research, Education and Patient Care	85,276	89,118	95,928	93,169	92,998
Equipment	8,137	9,618	2,083	1,868	4,122
	96,461	102,460	106,563	104,672	105,781
Excess (Deficiency) of Revenue over Expenses and Grants for the year	(5,029)	39,165	24,611	26,125	19,332
Fund Balances					
Endowments	233,837	250,297	271,911	294,553	271,702
Restricted	253,402	271,819	269,782	276,936	325,210
General	10,855	15,143	20,177	16,506	10,415
	498,094	537,259	561,870	587,995	607,327
Held By University of Toronto (as at April 30)	14,015	15,337	15,689	15,824	15,156
Total Capital	512,109	552,596	577,559	603,819	622,483

Notes
 1. Direct fundraising expenses represent costs for logistics, marketing and other expenses directly related to fundraising activities, including our major events such as Enbridge® Ride to Conquer Cancer®, OneWalk to Conquer Cancer and our Direct Marketing programs.
 2. General fundraising and administrative expenses are the overhead costs associated with running Foundation operations.

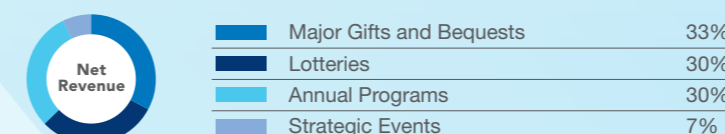
Fiscal 2020

The Princess Margaret Cancer Foundation is passionate about impact, efficient fundraising and effective stewardship to ensure we can achieve our collective vision to Conquer Cancer In Our Lifetime.

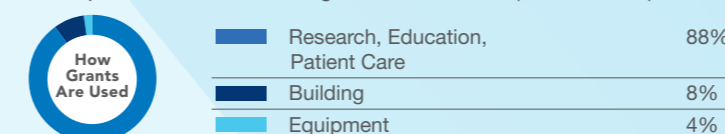
Fulfilling our Mission

We enable *Future Care Now* by raising funds that accelerate cancer research, education, and clinical care benefiting patients at Princess Margaret Cancer Centre, across Canada, and around the world.

Based on reported net fundraising revenue and lottery revenue (\$140.0 million):



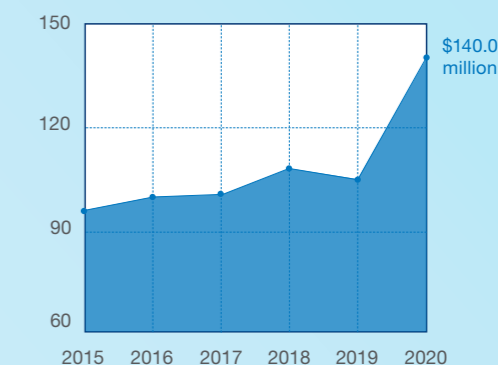
Grants provided to Princess Margaret Cancer Centre (\$105.8 million):



Beyond funds granted this year (\$105.8 million), the Foundation has multi-year research and clinical commitments in progress at Princess Margaret Cancer Centre.

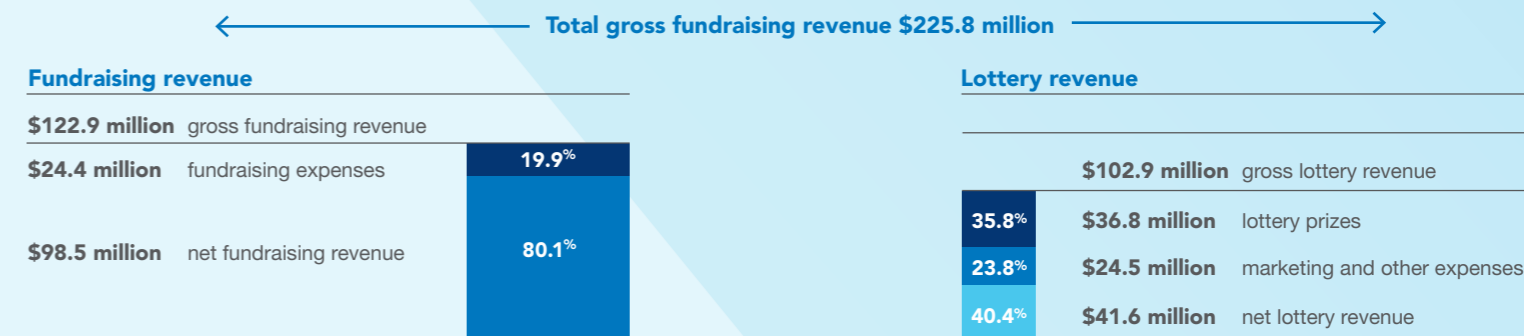
Year-over-year highlights

Net fundraising and lottery revenue (\$ millions)



Distinct revenue streams

Gross revenue (excluding investment income) of \$225.8 million disclosed in the CRA T3010 form is composed of two distinct revenue streams: fundraising revenue and lottery revenue. Cost ratios associated with these streams are treated differently by the CRA.



Direct fundraising expenses include costs for logistics, marketing, and other costs directly related to strategic events and annual programs.

The PMCF lottery net revenue return of 40.4% compares favourably to the industry average return of 30.0% based on the three largest charitable lotteries in Canada. The PMCF lottery cost ratio of 59.6% is substantially lower than CRA acceptable guidelines (70.0%+).

Fundraising efficiency measure

The PMCF raised \$1.73 million per full-time employee, making it one of the most efficient and effective charities in Canada.



Research Chairs

A Chair is the highest honour in academic life, prestigious for Chairholder and donor alike. Our Chairholders are recognized internationally for superior academic achievement, experience and success in teaching and research.

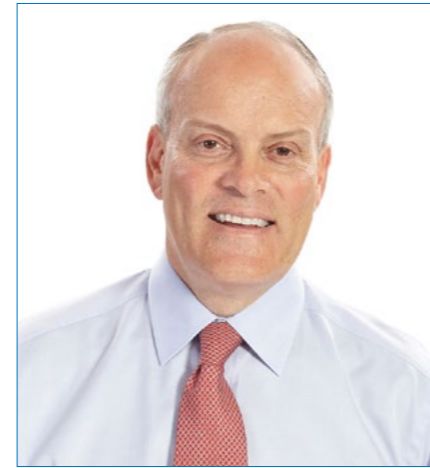
CHAIRS	CHAIRHOLDERS
AMGEN Chair in Cancer Research	Dr. Robert Rottapel
Bartley-Smith Wharton Chair in Radiation Oncology	Dr. John Waldron
Daniel E. Bergsagel Chair in Medical Oncology	Dr. Amit M. Oza
Molly and David Bloom Chair in Multiple Myeloma Research	Dr. Donna Reece
BMO Financial Group Chair in Precision Genomics	Dr. Lillian Siu
Alan B. Brown Chair in Molecular Genomics	Dr. Geoffrey Liu
Ronald N. Buick Chair in Oncology Research	Dr. Aaron Schimmer
Butterfield/Drew Chair in Cancer Survivorship Research	Dr. Jennifer Jones
M. Qasim Choksi Chair in Lung Cancer Translational Research	Dr. Ming S. Tsao
Richard H. Clark Chair in Cancer Medicine	Dr. Keith Stewart
J. Douglas Crashley Chair in Gynecologic Cancer Research	Dr. Sarah Ferguson
Dr. Mariano Antonio Elia Chair in Head and Neck Cancer Research	To be appointed
Anna-Liisa Farquharson Chair in Kidney Cancer Research	Dr. Antonio Finelli
Orey and Mary Fidani Family Chair in Radiation Physics	To be appointed
Gattuso Chair in Breast Surgical Oncology	Dr. Tulin Cil
Peter and Shelagh Godsoe Chair in Radiation Medicine	Dr. Fei-Fei Liu
JCB Grant Chair in Oncologic Pathology	To be appointed
K. Y. Ho Chair in Prostate Cancer Research	To be appointed
Kirchmann Family Chair in Neuro-Oncology Research	Dr. Warren Mason
Lee K. and Margaret Lau Chair in Breast Cancer Research	To be appointed
Harold and Shirley Lederman Chair in Psychosocial Oncology and Palliative Care	Dr. Gary M. Rodin
Wilfred G. Lewitt Chair in Pancreatic Cancer Research	Dr. Jennifer J. Knox
The Love Chair in Prostate Cancer Prevention Research	Dr. Neil Fleshner
The Addie MacNaughton Chair in Thoracic Radiation Oncology	Dr. Alexander Sun
Gullane Family/O'Neil Family Chair in Otolaryngology/Head and Neck Surgery	Dr. Ralph W. Gilbert
Philip S. Orsino Chair in Leukemia Research	Dr. Mark D. Minden
OSI Pharmaceuticals Foundation Chair in Cancer New Drug Development	Dr. Natasha B. Leighl
RBC Chair in Nursing Oncology, Research and Education	Dr. Samantha Mayo
R. Howard Webster Foundation Chair in Medical Imaging and Artificial Intelligence	To be appointed
Kevin and Sandra Sullivan Chair in Surgical Oncology	Dr. Jonathan C. Irish
Joey and Toby Tanenbaum/Brazilian Ball Chair in Prostate Cancer Research	Dr. Gang Zheng
Trachtenberg/Haque Chair in Image Guided Prostate Therapy Research	Dr. Heidi Schmidt
Weekend to End Breast Cancer Chair in Breast Cancer Research	Dr. Tak W. Mak
Westaway Chair in Ovarian Cancer Research	To be appointed
The Robert E. Wharton Chair in Head and Neck Surgery	Dr. Patrick J. Gullane
The Robert E. Wharton Chair in Reconstructive Plastic Surgery	Dr. Stefan O. Hofer

JOINT CHAIRS AT UNIVERSITY HEALTH NETWORK	CHAIRHOLDERS
Gloria and Seymour Epstein Chair in Cell Therapy and Transplantation	To be appointed
The Alan and Susan Hudson Chair in Neuro-Oncology	Dr. Fred Gentili
Pearson/Ginsberg Chair in Thoracic Surgical Oncology	Dr. Shaf Keshavjee
Scotiabank Research Chair	Dr. David Brooks
Fleck/Tanenbaum Chair in Prostatic Diseases	To be appointed
Scott Taylor Chair in Lung Cancer Research	Dr. Frances A. Shepherd
J. Gerald Scott/David G. Whitmore Chair in Hematology and Gene Therapy Research	To be appointed

Board of Directors

University Health Network (UHN)

April 1, 2019 to March 31, 2020



Brian J. Porter, Board Chair, UHN Board of Trustees



Kevin Smith, President and CEO, UHN

Elected Trustees (Voting)

Brian J. Porter

Chair

Ross Baker

Dean Connor

Todd Halpern

Stu Kedwell

Doug McGregor

Peter Menkes

Lawrence Pentland

Janet Rossant

Shirlee Sharkey

Barbara Stymiest

Peter Wallace

Jaime Watt

Cornell Wright

Trustees Appointed by U of T Governing Council (Voting)

Trevor Young

Cheryl Regehr

Ex Officio Trustees (Non-Voting)

Kevin Smith

Chief Executive Officer

Joy Richards

Chief Nursing Executive

Mark Osten

President of the Medical Staff Association

Fei-Fei Liu

Chair of the Medical Advisory Committee

Janice Fukakusa

Chair of The Princess Margaret Foundation Board

Raj Kothari

Chair of the Toronto General & Western Hospital Foundation Board

Board of Directors

The Princess Margaret Cancer Foundation

April 1, 2019 to March 31, 2020

Janice Fukakusa

Board Chair
Corporate Director

Mark Allison

VP Real Estate
Performance Auto Group

Terry Bacinello

President
TZB Holdings

Rohit Bhapkar

Senior Partner
McKinsey & Company

Sean Boyd

CEO
Agnico Eagle Mines Limited

J-F Courville

CEO
Wealthsimple for Advisors

David Engel

President and Founder
Innovative

Marnie Escaf

Senior VP, UHN
Executive Lead
Princess Margaret Cancer Centre

Harry Goldgut

Vice-Chair
Infrastructure and Renewable Power
Brookfield Asset Management Inc.

Dr. Mary Gospodarowicz

Medical Director
Princess Margaret Cancer Centre

Andrew L. Hoffman

Chief Executive Officer
CentreCourt Developments Inc.

Candace Innes

Marketing Consultant

Andrew Irvine

Head
Canadian Business Banking
BMO Financial Group

Glenn Ives*

Past Chair & Senior Partner
Deloitte Canada

Christina Kramer

Senior Executive Vice-President & Group
Head, Personal & Small Business Banking
Canada
CIBC

Stacey Madge

President & Country Manager
Visa Canada

Karen Maidment*

Corporate Director
TD Bank, TD Ameritrade

Bill Richardson

Senior Partner
Baker & McKenzie LLP

Richard Rooney

President
Burgundy Asset Management

Annie Ropar

CFO & CAO
Canada Infrastructure Bank

Larry Rosen*

Chairman & CEO
Harry Rosen Inc.

Dr. Aaron Schimmer

Research Director
Princess Margaret Cancer Centre

Jürgen Schreiber

Senior Managing Director
Katz Group

David R. Shaw

Chairman
LHH/Knightsbridge and Axiom Group

Duncan Sinclair

Chairman
Deloitte Canada & Chile

Kevin Smith

President & CEO
University Health Network

Jochen Tilk

Corporate Director

Stuart Waugh

Managing Director
& Managing Partner
Northleaf Capital Partners

Michael Worb

Founder & CEO
Accompass

Dr. Bradly Wouters

Executive Vice-President
Science and Research
University Health Network

Lara Brown: Determined to Tell Her Story

Lara Brown was standing outside of gate one at Scotiabank Arena when she heard the words “breast cancer” from the other end of the phone. She was 37 years old.

Lara, an active, healthy and recently divorced mother of two was “beyond exhausted.” She sells executive suites at Scotiabank—which meant a lot of hosting while the Raptors made their way to the Eastern Conference Finals. On top of that, she had just finished kickstarting a new beginning with back-to-back marathons in Paris and Rome. While jet lag and burnout seemed like obvious answers, she knew deep down that something wasn’t right.

In the shower one day, she discovered a pea-sized lump in her breast, which led to a mammogram, an ultrasound and then a biopsy. She asked for a referral to The Princess Margaret under the care of Dr. Bedard. “I knew two people that were treated there, I knew it was my best option,” she said.

Lara began each appointment with the following two questions: “Can I run?” and “Can I have a glass of wine?” Dr. Bedard wasn’t opposed to the running but said to make sure it was always a good wine. However, her radiologist, Dr. Liu, advised walking instead, mainly due to the low energy levels that often came with chemo treatments. What Dr. Liu didn’t realize is that Lara Brown does not have a walk button, and in that moment, decided she was going to be unlike any other patient before her and finish an Ironman. “You can’t tell a runner to walk,” Lara said.



Lara Brown celebrates the end of treatment

During chemo, she did five spin classes a week. When she wasn’t spinning, she ran...sometimes to appointments. And after just nine treatments, against her parents’ wishes, ran the Scotiabank half marathon. She experienced little to no side effects from treatment and managed to stand up against a drug that has the power to knock many others down.

“I refused to ask, ‘why me?’ because it was me,” Lara said. “I knew there were two paths this diagnosis could take; this was my story and I was going to tell it my way.”

The 21 days of radiation didn’t stop her either. “It left my skin raw, so I’d wear three bras to make sure nothing bled when I ran,” Lara said. When it was done, she hired a coach and started training—as she pushed through the lingering side effects and prepped for her final procedure, she asked “When can I swim, bike and run?”

On October 7, just 16 months after diagnosis, Lara heard these words, “Lara Brown, you are an Ironman.” She confirmed that day that anything is possible and urges others to continue pushing the limits and telling their own stories too.

Our thanks are also extended to the following individuals from our community of supporters who also serve on committees of The Princess Margaret Cancer Foundation:

Cecile Chung
Bob Dorrance
Tom Ehrlich
Stephen Goldhar
Marianne Harris

Helen Mallovy Hicks
Lorraine Kirchmann
Neville Kirchmann
Maureen Shaughnessy Kitts
Angela McDonald

Wendy Posluns
Tina Tehranchian
Michael S. Wilson
Betsy Wright

*Board term ended at September 2019 Annual General Meeting

Board Committees

The Princess Margaret Cancer Foundation

April 1, 2019 to March 31, 2020

BOARD COMMITTEE	LEADERSHIP	MEMBERSHIP
Audit & Risk	Chair: Annie Ropar (2026)	Terry Bacinello (2026) Janice Fukakusa (2020) Christina Kramer (2024) Duncan Sinclair (2027) Richard Rooney (2026)
Commercialization	Chair: Stuart Waugh (2023)	Rohit Bhapkar (2026) Janice Fukakusa (2020) J-F Courville (2026) Brad Wouters (UHN) Dr. Aaron Schimmer (Research Director, PM Cancer Centre) Executive VP Technology & Innovation, UHN (Vacant) Angela McDonald (Community) Glenn Ives (Community) Mark Taylor (UHN)
Governance	Chair: Duncan Sinclair (2027)	Candace Innes (2024) David Engel (2024) Janice Fukakusa (2020) David Shaw (2022) Duncan Sinclair (2027) Bill Richardson (2022) Maureen Shaughnessy Kitts (Community)
Granting, Stewardship & Impact	Chair: Sean Boyd (2022)	Janice Fukakusa (2020) Dr. Keith Stewart (2020) Andrew Irvine (2025) Christina Kramer (2024) Jochen Tilk (2027) Bill Richardson (2022) Harry Goldgut (2027) Dr. Brad Wouters (UHN VP Research) Dr. Aaron Schimmer (PM Research Director) Betsy Wright (Community)
HR & Compensation	Chair: David Shaw (2022)	Janice Fukakusa (2020) Michael Worb (2027) Stacey Madge (2027)

BOARD COMMITTEE	LEADERSHIP	MEMBERSHIP
Investment	Chair: Richard Rooney (2026)	Terry Bacinello (2026) Janice Fukakusa (2020) Andrew Hoffman (2025) Stuart Waugh (2023) Bob Dorrance (Community) Stephen Goldhar (Community) Marianne Harris (Community) Anish Chopra (Community) joined June 1, 2020 Azar Zafar (Community) joined June 1, 2020
Fundraising Advisory Board	Chair: David Engel (2024)	David Shaw (2022) Mark Allison (2026) Andrew Hoffman (2025) Andrew Irvine (2025) Janice Fukakusa (2020) Harry Goldgut (2027) Stacy Madge (2027) Jürgen Schreiber (2024) Duncan Sinclair (2027) Jochen Tilk (2027) Michael Worb (2027) Cecile Chung (Community) Tom Ehrlich (Community) Tina Tehranchian (Community) Michael Wilson (Community)
Executive Committee	Chair: Janice Fukakusa (2020)	Annie Ropar (2026) David Engel (2024) David Shaw (2022) Stuart Waugh (2023) Richard Rooney (2026) Duncan Sinclair (2027) Sean Boyd (2022)

Note: Janice Fukakusa, Board Chair is member of all Board Committees.

UHN Governance Appointments

COMMITTEE	ROLE	NAME
UHN Board of Trustees	Board Chair	Janice Fukakusa
UHN Finance & Audit Committee	Chair, Audit & Risk Committee	Annie Ropar
UHN Research Committee	Chair, Granting, Stewardship & Impact	Sean Boyd

Our Donors

Contributions reflect lifetime giving starting at \$25K+

TRANSFORMATIONAL

\$10,000,000+

Agnico Eagle
The Campbell Family
FDC Foundation
The Gerry and Nancy Pencer Brain Trust
Susan E. Grange
In Honour of Al Hertz
Hold'em For Life Charity Challenge
Glenn Hunnings
Family of Michael H. McCain
Radiation Oncologists - Princess Margaret Cancer Centre
Allan Slaight and Emmanuelle Gattuso
The Slaight Family Foundation

VISIONARY

\$5,000,000-\$9,999,999

BMO Financial Group
In Honour of Harry and Cissy Clark, and Nelson and Vesta Clark
Dr. Geoffrey R. Conway Memorial Foundation
The Elizabeth and Tony Comper Foundation
Graham Farquharson
The Gerald Schwartz & Heather Reisman Foundation
IBM Canada
The Allan and Ruth Kerbel Family
Lee and Margaret Lau
Ronald MacFeeters, Sheila MacFeeters, Laura MacFeeters and Elizabeth Hamilton
Myron and Berna Garron
The Muzzo Family
Phillip S. Orsino
RBC Foundation
The Samuel Family Foundation
Gabiella Schmidt
Warren-Connelly Families
Robert and Gerardina Wharton and Family

PIONEER

\$1,000,000-\$4,999,999

The Al Hertz Family Foundation
Amgen Canada
Daniel C. Andrae
The Andrée Rhéaume and Robert Fitzhenry Family Foundation
Susan and Murray Armitage
Arthritis Research Foundation
AstraZeneca Canada Inc.
The Atkinson Charitable Foundation

Anne Bartley-Smith
The Bhalwani Family
Molly and David Bloom
Boehringer-Ingelheim (Canada) Ltd.
Sean and Peta Boyd
Maggie Bras and Family
David and Paula Butterfield
Evelyn C. Byworth
Canadian Cancer Society
Cara Operations Limited
Celgene Corporation
Haji Usman Dawood Choksi Family
CIBC
Betty Florence Clark
Helen Mabel Cooke
J. Douglas Crashley
DeLoitte Touche Tohmatsu LLC
E.L. (Ted) Donegan
Robert Dorrance and Gail Drummond
Sherry and Edward Drew
The Drimmer Family
The Mariano Elia Foundation
Enbridge Gas Distribution
Joyce and Philip Epstein
Gordon and Donna Feeney
Saul and Toby Feldberg and Family
In Honour of Philip Feldberg
Lee Barbara Feldman
Nicholas and Lia Fidei
Jack Morris Freiman
Front Street Capital Charitable Foundation
Janice Fukakusa and Greg Belbeck
Bruce Galloway
Peter Gilgan Foundation
Giovanni and Concetta Guglietti Family Foundation
Peter and Shelagh Godsoe and Family
Harry and Gayle Goldgut and Family
Mitchell Goldhar
Greenpark Group
Gucciardi Family
Gerald Hatch
K.Y. Ho and Family
George Ingram
Inmet Mining Corporation
Interior Finishing Systems Training Centre
International Union of Operating Engineers Local 793
Ira Schneider Memorial Cancer Foundation
Jack Weinbaum Family Foundation
Janet D. Cottrelle Foundation
Jesse & Julie Rasch Foundation

John and Myrna Daniels
Joint Department of Medical Imaging- Radiologists
In Honour of Melissa Ann Katzman
Paul Kennaley
James S. Kinnear
Neville and Lorraine Kirchmann
La Fondation Emmanuelle Gattuso
Stephan and Sophie Lewar
The Lewitt Family Foundation
Lilly
Longo's Family Charitable Foundation
Jon and Nancy Love
Mary Susan MacDonald
Gail MacNaughton
Tak W. Mak
Maple Leaf Foods Inc.
George E. Mara
The Matthews Family
Margaret and Wallace McCain
Merck Canada Inc.
Olive Metcalfe
The Michael Young Family Foundation
The Nadir and Shabin Mohamed Foundation
The Norman and Marian Robertson Charitable Foundation
Novartis Pharmaceuticals Canada Inc.
Ron Oberlander
Murray and Judith O'Neil
Ortho Biotech
OSI
Pancreatic Cancer Canada Foundation
In Honour of Joan Parkes
Pfizer Canada Inc.
Michael V. Plachta
The Posluns Family
The Princess Margaret - Volunteer Resources
R. Howard Webster Foundation
Nita and Don Reed
RioCan REIT
Family and Friends of Toby Robins
Roche
Richard Rooney and Laura Dinner
Harry Rosen Inc.
The Rosen Family
S.O. Asher Consultants Ltd.
Sanofi
Scotiabank
David Shapiro
Etta and Shiri (Shri) Shastri
Shoppers Drug Mart
Lana Sniderman

The Strobele Family
Kevin M. Sullivan and Family
Kazimiera Supczak
Joey and Toby Tanenbaum
Tauba & Solomon Spiro Family Foundation
The Tawse Family Charitable Foundation
Joan and Ken Taylor
TD Bank Group
J.W. Nevil Thomas and Family
Edward G. Thompson and Family
Fred and Vicki Tomczyk
Gordon Tozer
Tony and Wendy Traub
Varian Medical Systems
The WB Family Foundation
The Westaway Charitable Foundation
Gordon Wittrock
Family and Friends of Lusi Wong
Yamana Gold Inc.

CHAMPION

\$500,000-\$999,999

Abbott Nutrition
ABC Group Inc.
Alamos Gold Inc.
Alivewell Limited
Keith Ambachtsheer and Virginia Atkin
Douglas and Elsie Andrew
Lucio and Angela Angelucci
Family and Friends of Paolo Ardizzi
Astellas Pharma Canada Inc.
Jack and Patricia Barclay
Marvin and Linda Barnett
Karen and Bill Barnett
Barrick Gold Corporation
Ben and Hilda Katz Charitable Foundation
The Bennett Family Foundation
Penelope Bonner
Boston Pizza International
Allan and Lisa Brown, Richard and Laurie Lederman
Bryant Family
Klaus Bytzek Family
The Cadillac Fairview Corporation
Denys Calvin and Nina Rapoport
Bryon Critchell Reburn Beal
Campbell
Canadian Breast Cancer Foundation - Ontario Chapter
Kidney Cancer Research Network of Canada
Cancer Care Ontario

Walter Ciona
Edna M. R. Clark
David and Lynn Coriat
Arthur Cushing
Department of Supportive Care
Division of Medical Oncology and Hematology - Princess Margaret Cancer Centre
Joseph Neil Monteith Dunsmore
Charles Edmonds
Tom and Karen Ehrlich and Family
Jim and Margaret Fleck
George Gajdos
The Geoffrey H. Wood Foundation
George and Helen Vari Foundation
GOLDCORP
Andrew and Aviva Goldenberg
Heather and Ross Hamlin
The Henry White Kinnear Foundation
Patrick Hodgson Family Foundation
Andrew Hoffman and Leslie Giller and Family
IAMGOLD Corporation
Imperial Oil Foundation
International Association of Heat and Frost Insulators and Allied Workers, Local 95
Ipsen Biopharmaceuticals Canada Inc.
Irving Tissue
Arnold and Lynn Irwin
Sylvia Jaychuk
Elspeth A. Johnson
Betty Mendelsohn Kalmanasch
Naser Khan
Kinross Gold Corporation
Gerald and Paula Kirsh and Family
KPMG Foundation
The Kresge Foundation
Helena H. Lam
John and Linda Lamacraft
Norm and Laura Lamarche Family Foundation
Richard and Laurie Lederman and Family
The Lillian Meighen and Don Wright Foundation
Linda Frum & Howard Sokolowski Charitable Foundation
Longo Brothers Fruit Markets Inc.
Macquarie Group Foundation
Manulife Financial
Marjorie Allan Foundation
McCarthy Tetrault Foundation
Jim Meekison and Carolyn Keystone
Merrill Lynch Canada Inc.
Wanda Mikonis
Municipality of Metro Toronto
W. Patrick J. Neal and Deanna I. Neal
Robert and Robin Ogilvie
Mel Pearl
Dr. Elzbieta Rosnowska-Perera and Dr. Norbert Perera
PreMD Inc.
Roy William Pullen
R. Samuel McLaughlin Foundation
Rexall

June Kathleen Ridley
Lionel and Helaine Robins
Josephine Luella Rogers
Anna Rolling
Barrie Rose and Family
Niki Bledin
Maneck Sanjana
Ruth Lynne Schacter
James Herbert Scott
David and Martha Shaw
Apotex Foundation - Honey and Barry Sherman
Shiu Pong Group of Companies
Gary and Donna Slaight
Gerald and Marion Soloway
Stevens Family
Paul and Doreen Sudolski
Suzy's Inc.
Ian Tannock
Ian Telfer and Nancy Burke
TELUS
Philip Torno
Toronto Firefighters Association
In honour of Betty Florence Turnbull
University of Toronto Alumni Association
The W. Garfield Weston Foundation
Stuart and Esther Waugh
Richard Wernham and Julia West
Lawrence William Wert
Robert Charles Willams
Michael and Margie Wilson
Florence and Mickey Winberg
Y.M Inc. Charitable Foundation

INNOVATOR

\$250,000-\$499,999

A.W.B. Charitable Foundation
Clive and Barbara Allen
Hazel May Arnold
The Asaro Family
Margaret and John Bahen
The Barnes Family Charitable Foundation
C.W. Barootes
Thomas J. and Sonja Bata
William Bauman
Bayer HealthCare
Bell Canada
Joseph Henri Boucher
Geoffrey Allan Boyes
Brampton Brick Limited
Jamie and Leah Bras & Family
The Bresler Family
Bristol-Myers Squibb Canada
Brookfield Partners Foundation
The Buchan Family Foundation
Canadian Pacific Charitable Foundation
Cancer Research Society
Gloria Veronica Maria Pasquale Cann
Canso Investment Counsel Ltd.
The Carolyn Sifton Foundation
CGI
In Honour of Jim Chamberlain
Ellen Clare

Barry and Sue Cooper
Eve and Harold Corrigan
Irene Crowe
Davies Ward Phillips & Vineberg Foundation
Gladys M. Davis
Anne Margaret Delicaet
Domenic and Bernisea Dell'Elce
Lionel & Winsome deMercado
Dental Associates - The Princess Margaret
Corinne Shirley Devereil
Ian and Anne Devine
Victor Di Carlo
William Lionel Dick
Eric and Heather Donnelly
Dylex Limited
The Eaton Foundation
James Edmondson
Anna Engel and Family
Ernst & Young LLP
Shirley Pond Estey
Faith of Life Network
Ivana Amato Farrar
Fell Family
Elizabeth B. Ferguson
Isobel Findley
Kristiina Fiorino, In Honour of Ceciliia Fiorino
Astrid H. Flaska
Fondazione CRUP - Cassa Di Risparmio Udine - Pordenone
Friends For Life
Mavis Gardiner
General Motors of Canada Limited
Mohamad B. Ghadaki and Family
Max Murray Glassman
GlaxoSmithKline
Gluckstein Design Planning Inc.
Lei-beng Goh
Charles and Marilyn Gold Family Foundation
Michael and Libby Goldgrub
Pearl Goodman
Goodmans LLP
Kathleen and James Gowans
Senator Jerry and Carole Grafstein
Grafton Apparel
Hon. Bill Graham
The Grand Chapter of Royal Arch Masons of Canada
Shirley Granovsky
The Great - West Life Assurance Company
Green Shield Canada Foundation
Cathy Hale
Koji and Mizue Handa
Charles Hantho Family
In Honour of Walter Harhay - Annette, Christopher and Katherine Harhay
The Harold E. Ballard Foundation
Harrison McCain Foundation
In Honour of David W. Harrold - Maija Karppa
David Hedley
Honda Canada Inc.

HSBC Bank Canada
Hudson's Bay Company
Jennie Huie
Patrick Hung and Family
Immunex Corporation
Inco Limited
Eric and Candace Innes
The Ira Gluskin and Maxine Granovsky Gluskin Charitable Foundation
The Jarislowsky Foundation
The Joe Di Palma Brain Tumor Pediatrics Foundation
The John Labatt Foundation
Joseph H.M. Wood Foundation
J.P. Bickell Foundation
George Kalmar and Family
The Karen Green Charitable Trust
In Honour of Ramona Rull Karson
Katz Group Canada Ltd. - Rexall
Judith and Stephen Kauffman
Farsad Kiani
Kodak Canada Employee Trust Fund
Monty and Isabella Koffman
Nellie Koleff
Christina Kramer
Mary Irene Hazel Langford
Joyce E. Larkin
James and Moira Lawrence
James Grant LeBlanc
Vincent William Lee
David LeGresley
Lynda Levick
Local 67 - United Association of Journeyman & Apprentices
Johannes Petrus Loggen
Sandy and Bart MacDougall
M. Ann MacMillian
Stacey Madge and Jeff Willner
Magna International Inc.
Marant Construction Limited
Malanie Maria Szychott Mason
Master Insulators' Association of Ontario Inc.
Max Bell Foundation
McMaster University
Marion H. McRobert
Mechanical Contractors Association of Ontario
Michael and Kelly Meighen
Helen Eileen Meredith
Lazo Mikijelj
Gloria Lorraine Mitchell
The Molson Family Foundation
Henry Irving and Florence Isabel Montgomery
John Edward Montgomery
Karen and Paul Morton
The Lewin and Moscarello Families
Mount Sinai Hospital - Department of Surgery
Patrick Muldoon
National Bank Financial
Nelson Arthur Hyland Foundation
Eleanor L. O'Neill
Ontario Financial Services
Ontario Pipe Trades Council

Osler, Hoskin & Harcourt LLP
 Germaine Maria Van Overloop
 James Chiorotas Pappas
 PCMnow.com Inc.
 Jane Poulson
 PwC Canada
 Prostate Cancer Canada
 Michael A. Psaki
 Randstand Foundation
 Pamela Ann Roberts
 Robin and Barry Picov Family
 Foundation
 Rogers Group of Companies
 Avie and Fonda Roth
 Phillip Rubinoff
 Sauder Industries Limited
 Hubert B. Sceats
 The Schneider Family Foundation
 Sears Canada Employees Charitable
 Fund
 Antonio Sicilia
 Silverberg/Appleby Family
 Sam Sivitz
 Greg and Diane Slight
 Lana Hershelle Sniderman
 Nicola Ziva Stanacev
 Robert H. Sheard
 Morag L. Stewart
 John William Stone
 In Honour of Ann Storfer
 The Sun Life Companies
 Anne Tanenbaum
 Allan and Shirley Taylor
 Teck Resources Ltd.
 The Tecolote Foundation
 Torys LLP Barristers & Solicitors
 Toshiba of Canada Ltd.
 Trade Secrets
 Pat Nichols and Bob Tundermann
 Under Armour Canada ULC
 United Association of Plumbing and
 Pipe Fitting Local 46
 United Association
 Universal Workers Union Local 183
 George and Kathleen Vice
 Natalie Lucy Vince
 Joseph Vitale and Daniela
 Botto-Vitale
 Thomas William Walker
 Walmart Canada Corp.
 We Love You Connie Foundation-
 Guglietti Family
 Norine D. Weller
 Vera Wheatley-McDermott
 Robert Elliot and Paul Wilson
 Geoff Wilson and Joanne Poulin
 J. Orton Wocker
 Worb Family Foundation
 Hazel Eleanor Wright
 Harold E. Yeo
 Ralph Zarboni

LEADER
\$100,000-\$249,999
 1234512 Ontario Inc.
 James Henry Abbey

Leonard and Marcy Abramsky
 Accenture
 Vernon Achber and Philip B. Lind
 Acier Wirth Steel
 Mollie Adamson
 Adlib Software
 David and Sharon Aello
 Afexa Life Sciences Inc.
 AGF Management Ltd.
 Joseph and Morena Agueci
 Ruth Mary Aitken
 Alcan Aluminum Ltd.
 Alectra Utilities
 Mark and May Allison
 The Alofs Family
 American Cyanamid Company
 Amersham Health Inc.
 Ampere Limited
 From the Appel Family In Honour of
 Bram and Bluma
 Bram and Bluma Appel
 Jim Archer-Shee and Mary
 Matthews
 Paul Atkinson
 Atlantic Packaging Products Limited
 Pamela and Paul Austin
 Hugh Balders
 Howard L. Banting
 BAPS Charities Inc.
 Barry and Laurie Green Family
 Charitable Trust
 BASF
 Margaret Glasgow Baxter
 John Baycroft
 Stephen and Dianne Bear
 W. Geoffrey Beattie
 Elizabeth Anne Beaudin
 Bob and Diann Bell
 Bellville Rodair International
 BGIS
 Rohit Bhapkar and Jaswinder Salh
 BHP Billiton Plc
 Martha Billes
 Herb and Fran Binder and Family
 Rudy and Lena Biskup
 The Black Family Foundation
 Blake, Cassels & Graydon LLP
 Cindy Blakely and Robert Blakely
 Marie Blazic
 BLJC
 Phil and Dorthea Bloom
 BloombergSen Investment Partners
 Eugene Boccia
 Borden Ladner Gervais
 In Honour of Ann Borooh
 Bothwell Accurate Co. Inc.
 John and Susan Bowey
 Peter and Judith Bowie
 Bill and Eileen Brennan
 The Brides' Project
 Brookfield Asset Management Inc.
 Brookfield Global Integrated
 Solutions
 Philip Browman and Family
 Betty Ruth Brown
 Helen C. Burdett

Jane Burfield
 Burgundy Asset Management Ltd.
 In Recognition of Ruth Burnett From
 Joseph, Gail, Lorne and Sheldon
 Burnett
 Canadian National Christian
 Foundation
 Canadian Partnership Against
 Cancer Corp.
 Canadian Tire Corporation, Limited
 Cardano Risk Management B.V.
 Catherine and Maxwell Meighen
 Foundation
 Sandra Carlton
 Carpenters Union
 Gary Birchmore Carter
 Barbara Lee MacFadyen Cartwright
 John G. Cassils
 Centre Hospitalier De L'Universite
 De Montreal
 Bob Chan
 Cheong Chu Chan
 Eleanor Gladys Chapman
 Charities Aid Foundation America
 Alexander and Saralee Christ
 CI Investments
 Citipark Inc., Carole and Bernard
 Zucker and Family, Wendy and
 Elliott Eisen and Family
 Ellen Clare
 Shirley Ruth Clark
 Elizabeth Clemence
 Manuel Clementino
 Clench House Foundation
 Coalition to Cure Prostate Cancer
 Coffee Time (2015) Corp.
 Arthur and Harriett Cohen
 Esther and Jack Cole and Family
 Maurice and Kumari Colson
 Con-Drain Company (1983) Ltd.
 Mary C. Conway
 Gail and Irving Cooper
 Sydney and Florence Cooper and
 Family
 Coppa's Fresh Market
 Rudy and Lena Biskup
 Cormack Securities Inc.
 Betty Cragg
 Caroline Anne Crandall
 Elizabeth Crawford
 Credit Suisse and the Credit Suisse
 Americas Foundation
 William G. Crerar In Honour of
 Susan E. Crerar
 Lyla Ada Crossley
 Faith and Noel Croxon
 CTVglobemedia Inc.
 Jeff and Carolyn Cullen
 John and Erica Reiss Family
 Foundation
 Danier Leather Inc.
 Miriam David
 Rosemary Rita Deleo
 George and Katherine Dembroski
 In Honour of Teresa, Robert and
 Elsie Agnes Demers
 Robert J. Deyell Family
 John Di Poce

Division of Thoracic Surgery,
 Princess Margaret Cancer Centre/
 UHN
 Mabel Pearl Downer
 Dr. Jay Charitable Foundation
 William and Dorothy Drevnig and
 Family
 Marlene Drutz
 Elizabeth O. Duke
 Henrietta Duncan
 Ronald James Dunn
 Dupont Canada Inc.
 Joseph James Duxbury
 Dynamic Mutual Funds
 E. and G. Odette Charitable
 Foundation
 E.S. Fox Limited
 Audrey Edwardine Eaton and Family
 Ed Mirvish Enterprises Ltd.
 The Edper Group Limited
 Ken and Susan Edwards, Megan
 Edwards, John and Jennifer
 Cranfield
 Eisai Limited
 Ivan Elkan
 Ellis-Don Limited
 David and Judy Engel
 Gloria and Seymour Epstein
 Wilfred M. Estey
 Exact Imaging
 Export Packers Company Ltd.
 Falconbridge Limited
 Agnes Faraci
 Fasken Martineau DuMoulin LLP
 Joseph Vincent Febbo
 David and Angela Feldman
 Goldie Feldman
 David and Gwendolyn Ferguson
 Irene Helen Feuer
 Fidelity Investments Canada
 Fiera Foods Company
 Firefighters Against Cancer's
 Existence Foundation
 Eva Flinders
 Ford Motor Co. of Canada, Ltd.
 Archibald J. Forsyth
 Roy Foss
 Wayne and Isabel Fox
 Family of Elizabeth M. Francis
 John Douglas Franks
 Fraser Mackenzie Ltd.
 Freedom International Brokerage
 Inc.
 Michael Freid
 Harvey and Helen Fruitman
 G.A. Paper International Inc.
 Emilio and Yola Gambin
 Ganz Family Foundation
 Lloyd David Gareh
 Gary Bluestein Charitable
 Foundation
 William Thomas Geddes
 GE Canada
 Sorin Georgescu
 Gerry and Caren Ruby Family
 Foundation

F. Douglas Gibson
 Haley and Kosty Gilis
 Marjorie Ginsberg
 GlencoreXstrata
 Gerald and Naomi Goldenberg
 Leo and Sala Goldhar
 Goldman, Sachs & Co.
 David and Bonnie Goldstein
 Susan Gordon
 Warren and Barbara Gorgan
 Victor Kelman Grant
 Great Gulf Homes, First Gulf Corp. &
 Tucker Hi-Rise
 Great-West Life
 Anthony Green
 Al and Malka Green
 Alan Greenberg
 Patricia Bernadette Greene
 Richard N. Gundy
 James Gutmann
 Katerina Haka-Ikse
 Joe and Samar Hamadi
 Daniel John Hanowski
 Frank Hardy
 Edwin J. Hart
 Harvey Kalles Real Estate Ltd.
 Hatch Ltd.
 Haynes Connell Foundation
 The Herbert & Henrietta Charfoos
 Philanthropic Fund
 Mildred Herzog
 Joan R. Hickey
 Pauline Hicks
 Jacqueline Ford and Geoffrey Hinton
 Egon Homburger and Lucie Tuch
 Homburger
 Patricia Hosack
 Margaret J.H. Howitt
 Margaret Joan Howlett
 Glenda Hummel - May we cure
 cancer in our lifetime
 IBEW Construction Council of
 Ontario
 Norman Andrew Mac Ilvridle
 International Association of Heat
 and Frost Insulators and Asbestos
 Workers
 Andrew and Stephanie Irvine
 Robert, Janet and James Isaac
 Ivanhoe Cambridge Inc.
 Katherine and Glenn Ives
 Jack and Buschie Kamin Foundation
 Jacqueline Seroussi Foundation
 The James & Patricia Bullock Family
 Foundation
 James J. Hammond Fund
 Jancor Developments Inc.
 The Jane and Tom Sabourin Family
 Foundation
 JBS Foundation Inc.
 Jewish General Hospital
 Jewish General Hospital Foundation
 Jilla and Robert Williams Foundation
 The Jodamada Foundation
 The Jane and Tom Sabourin Family
 Foundation
 Edith Alice Johnston

Jonathon D. Fischer Foundation
 Nizar and Gulzar Kanji
 Jack and Pat Kay
 Marty Kelman and Gilda Tanz
 Khodkar Investments Inc.
 Warren and Debbie Kimel
 Klick Communications Inc.
 Michael M. Koerner
 John and Margaret Krall
 Jean Kramar
 Mary Kumhyr
 Morris and Marcia Kwinter and
 Family
 Thomas Kwok
 Arthur and Maggie Lai
 Lara Anne Hudson Foundation
 Laurel Steel
 The Lawrence and Judith
 Tanenbaum Family Foundation
 Helen Maureen Leah
 John and Jocelyn Lecluse
 Harold Lederman and Family
 Micki Leger-Simpson
 Charles LeGresley
 Leslie Elgin Developments Inc.
 Stephen Letwin
 In Honour of Elysa Lipson
 Harry Littler
 In Honour of Lai Chun Liu
 Loblaw Companies Ltd.
 Esther and John Loewen Family
 Sheila and Sydney Loftus and
 Family
 C. Donald Logan
 London Life Insurance Company
 Wendy Long-Davies
 Romeo DeGasperis - Lymphoma
 Canada
 Duncan and Lois McArthur
 Elizabeth Ann Macaulay
 Sandy and Bart MacDougall
 Colleen Campbell and Stuart
 MacGregor
 Mackenzie Investments
 In Honour of William and Bettie
 MacLaren
 The Marmilwood Family Trust
 Mary Lenore Mackie
 Adrienne and Douglas Mahaffy
 Karen and David Maidment
 Emile Marino
 In Honour of Ben and Sylvia Marks
 Gladys F. Marsh
 Anne Marie Therese Martin
 Christopher and Deborah Martin
 Masters Insurance Ltd.
 Mattamy Homes Ltd.
 Elvira Maybee
 Joseph Neville McCarthy
 Helen L. McCartney
 McCarty Cancer Foundation
 Joyce L. McCathie
 Family of Marion Margaret
 McCormick
 Sheila and David McCracken
 Thomas and Jean McCulloch

McDonald's Restaurants of Canada
 Ltd.
 Andrew and Barbara McIntyre
 Bruce and Janet McKelvey
 McKinsey & Company
 Elizabeth Margaret McLean
 Ken A. McLean
 Norma Jean McLean
 John Clark McMillan
 MDS Inc.
 Rikki Meggeson
 Randy Mellon
 James Kyle Mellor
 June Anne and David Melnik
 Murray and Pauline Menkes
 The Menkes Family
 MFS Investment Managment
 Howard and Lois Michaels
 Charles Franklin Miller and Donna
 Marie Piper Miller
 Garton Stuart Miller
 Marlene Miller
 Harley Mintz
 Gary and Alessandra Morassutti
 Stephen Morson
 Mortgage Alliance
 Ingrid Katharina Mueller
 Mulvihill Capital Management Inc.
 Sanjib and Bharati Mukherjee
 Blanche B. Murray
 National Breast Cancer Fund
 The National Basketball Association
 Mildred Neilly
 New Gold Inc.
 Next Plumbing & Hydronics Supply
 Inc.
 James and Christine Nicol
 Lois Nightingale
 Michael, Ryan, and Danielle Nisker
 Gordon and Janet Nixon
 The Norman and Margaret Jewison
 Charitable Foundation
 The Northpine Foundation
 Nuyten Dime Foundation
 Geoffrey and Dawn Ogram
 Brian O'Keefe
 Thomas and Muriel Oliver
 Onex
 Ontario Power Generation
 Employees' & Pensioners' Charity
 Mary Pawlyk and George Onyschuk
 Onyx Pharmaceuticals Inc.
 Desmond and Pamela O'Rorke
 Oshawa Group/Pharma Plus
 Foundation
 Erika and Peter Ottensmeyer
 Marie J. Overweel
 Galina Ozols
 Ozz Electric Inc.
 Paladin Labs Inc.
 Chris G. Paliare and Eva Marszewski
 Ruth and Irving Papoff
 David Pauli
 Paypal Giving Fund Canada
 Pediatric Oncology Group of Ontario
 (POGO)
 Ruth Pedley
 Pelmorex Media Inc.

Joan Pemberton
 Charles Petersen and Riki Turofsky
 Petro-Canada
 Pfaff Automotive Partners Inc.
 The Philip Smith Foundation
 The Pickle Barrel
 Donald William John Pierce
 Elma P. Pinder
 Pizza Pizza
 Placer Dome Inc.
 PM Fine Cabinetry Inc.
 The Polar Foundation
 Janet Polivy-Herman
 Bonnie Poole
 Margaret S. Preston
 Primero Mining Corp.
 Andrew and Valerie Pringle
 Bernice Elizabeth and Allan Ross
 Profit
 Project and Construction
 Management Inc.
 The Prostate Cancer Fight
 Foundation
 Chris S. Purkis
 Elizabeth H. Quemby
 THE QUILT: A Breast Cancer
 Support Project
 David and Janice Radtke
 Edward Norman Ratcliffe
 In Honour of John F. Rawn - Gareth
 W. Evans
 Raymond James Canada
 Foundation
 Ernest Redelmeier Family
 Juta Reed
 Janet Clyde Reid
 Edith Margaret Reid-Weston
 Hartley and Heather Richardson
 Ab, Jackie and Ethel Richmond
 Gwendolyn H. Riding
 Ken Robins
 Joseph Jean Louis Jacques
 Rodrigue
 Clayton Lloyd Rogers
 Helen Lenore Roszell
 Reeta Roy
 The Royal College of Physicians and
 Surgeons of Canada
 Royal de Versailles Jewellers
 RSM Richter
 Hana Rubins
 The Rudolf P. Bratty Family
 Charitable Foundation
 Ruth and Irving Levine Family
 Foundation
 Ruth Ruttan
 Sage Investments Ltd.
 Norma Kathleen Sanderson
 Cookie and Stephen Sandler
 Rudolph Schaffler
 Edna Mary Schroeder
 S. Schulich Foundation
 Alan Schwarz
 The Seagram Company Ltd.
 Victor Secrett
 Seniority Investments Limited
 Jyotsna and Rajendra Shah

The Sheldon Inwentash and Lynn Factor Charitable Foundation
 Stanley and Donna Shenkman Sherry and Sean Bourne Family Charitable Foundation
 Shorcan Brokers Ltd., TSX Group Naju B. Shroff
 Sick Kids Charitable Fund
 Harry Reginald Smith
 Stuart and Wendy Smith
 Evelyn Anna Lillian Soame
 SOBEK Investments Ltd.
 Soberman LLP Chartered Accountants
 Sobeys Inc.
 Ed and Fran Sonshine
 Sporting Life Inc.
 Frank Squizzato
 Sean and Alex St. John
 Carolyn Prue and Paul Starita
 Vineyard Holdings Inc.
 Starlight Investments Inc.
 Denis Evans and Roy Steed
 Beth Weingarden and Paul Stein
 Ronald S. Steinberg and Nancy Prussky
 The Steve and Sally Stavro Family Foundation
 Michael Storfer
 Jozef Straus
 Sugoi Performance Apparel
 Roger and Marie Sutton
 Eva and Gabor Szekely
 TACC Construction Ltd.
 T.G.H. Otolaryngology Research Group Inc.
 Rose and Charles Tabachnick
 Tanurb Developments Inc.
 Tesari Charitable Foundation
 Teva Novopharm Ltd.
 Grace Lorraine Thomas
 Tudor Thomas
 Douglas Thompson
 Jochen Tilk and Denise Belman
 Tolin Enterprises Ltd.
 Toronto Star
 John and Liz Tory
 Trimark Investment Mgt. Inc.
 Trio Roofing Systems Inc.
 Stella Trudgeon
 Gary Dell'Ernia and Ilias Tsilimigras
 Ted and Laura Tubbs
 Violet Annette Turley
 George and Mary Turnbull and Family
 Turner Fleischer Architects Inc.
 UBS Securities Canada Inc.
 UHN Division of General Surgery
 Vince and Joanna Verduci
 Peter Von Schilling
 Robert & Wanda Wagner
 Hugh Walker
 Isobel Walker
 Peter and Holly Walsh
 Elizabeth M. Walter

Bert Wasmund
 James A. Waters
 Albert G. Watson
 Waugh Family Foundation
 James William Webb
 Larry Weir
 Wheaton Precious Metals
 Robin and Barbara White
 Elliott and Mimi Wilson
 Florence Kathleen Wilson
 Herbert Allan Wilson
 Michael and Shari Wilson
 Florence Winberg
 Edward E. Wise
 The Woodbridge Company Ltd.
 Betsy Wright
 Chung Hwei Wu
 Family and Friends of Edie Yolles
 Margaret Zavitz
 Dylan and Taylor Zivojinovich
 The Zuckerman Family

PARTNER \$50,000-\$99,999

1598062 Ontario Inc.
 6172792 Canada Inc.
 912034 Alberta Limited
 92491 Canada Ltd.
 A & J Vacworx Inc.
 A.G. Simpson Automotive Inc.
 Abitibi-Consolidated Inc.
 Sarah Evelyn Ackrow
 ACXSYS Corporation
 Violet Adair
 Ronald J. Adams
 Adidas Canada Ltd.
 Agardy Glass & Aluminum Inc.
 Albion Glass Company Ltd.
 Michael Alkis
 Don and Elyse Allan
 All-Connect Logistical Services Inc.
 Dave and Maureen Allen
 Alli's Journey
 Paula Almeida
 Rose Anderson
 Barry Appleby
 Ardis Archer
 Mavis Ardern
 Arista Homes
 John and Barbara Armstrong
 Florence and Jack Arnold
 Arthur Andersen
 Reginald Ash
 Aspen Ridge Holdings Inc.
 Assante Wealth Management
 ATS Automation Tooling Systems Inc.
 Brian Aune In Honour of Brian Steck
 Pamela and Paul Austin
 Aviva Canada Inc.
 B & David Industrial
 The B.I. Ghert Family Foundation
 Audrey Babb and Walter Maves
 Bailey Metal Products Ltd.

Mary Ellen Baker
 Baker Real Estate Inc.
 Bank of America Merrill Lynch
 Bank of Cyprus - Chain of Life
 Frank Barassi
 Barclays Capital Canada Inc.
 Joseph Sam Barrese
 Family of Matthew W. Barrett
 Robert and Francine Barrett
 Ron and Sharon Baruch
 The Basian Family
 Douglas Bassett
 BDO Canada LLP
 Joceline Beaudry
 Stephen Belgue and Michelle Di Carlo
 Ian and Helen Berry
 Giovanni Bianchini
 Rochelle and Mike Biderman
 and Family In Honour of Frances
 and Ben Brock, Rose and Chuck Biderman
 Don and Pam Bierstock
 Joel Binder
 Birchall Family Foundation at the
 Toronto Community Foundation
 The Bitove Foundation
 Heather E. Black
 Black & McDonald Ltd. Electrical &
 Mechanical Contractors
 The BLG Foundation
 Barenaked Ladies
 Alice Boccia
 Bomanite Toronto Ltd.
 Bondfield Construction Company Ltd.
 Renee Botterbusch
 Bourne Family Foundation
 Philip Deck and Kimberley Bozak
 Tanya and Paul Braun
 Roman Brenner
 The Bridle Bash Foundation
 Gail and Gary Brown and Family
 Anne Marie Brownlee
 Cathy Buckingham and Denis Galbraith
 Gladys Buckler and Family
 Elisabeth Louise Burgess
 M. William and Dorothy Burke
 Michael F. Burke
 Trevor Byrne
 Caldwell Partners International Inc.
 Calsper Developments Inc.
 Canada Dry Motts Inc.
 Canada Goose
 Canadian Council On Learning
 Canadian Health Services Research
 Foundation
 Cancer Assistance Services, Halton
 Hills
 Joseph Carelli
 The Carol Sheriff Foundation
 Carpenters District Council of
 Ontario
 Dorothy M. Carr

Barbara Marjorie Carson
 John & Mary Cassaday
 Cassels Brock & Blackwell LLP
 In Honour of W. Manson Catterson
 Joan Cavanagh
 CCTFA/Look Good Feel Better
 CGC Inc.
 CGOV Foundation
 Larry Chapman and Cassie Connolly
 Mary Chapman
 Loi Shun Charn
 William and Inge Christie
 W. Edmund Clark
 Larry Clarke
 Deirdre Clement
 Tom Closson
 Thomas Richard Cluff
 Laura Anne Coates
 Coca-Cola Canada
 George and Susan Cohon
 Steven Cohen
 Colio Estate Wines
 Magdalena Paulina Collins
 Compaq Canada Inc.
 Con-Elco Ltd.
 Coopers & Lybrand
 May and Ken Copland
 Joan and Frank Copping
 Cott Corporation
 L.E. Cotterchio
 The Estelle Craig Family Trust
 Paul and Elvi Craig
 Cranbrook Glen Enterprises Limited
 Alfred Stanley Noble Creer
 Barbara Crispo
 Ava Weinberger Cross
 Jean Cross
 Norman and Grace Cross
 Crown Life Insurance
 Adele E. Curry
 David and Stacey Cynamon
 Fern Daiter
 Harry Daniel
 Penella Davies
 Davis & Henderson Ltd.
 John M. Davison
 Valerie Sharon Dawson
 The Dawson Family Sharing
 Foundation
 Garry and Patricia DeGeer
 Elvio Del Sorbo
 Delavaco Inc.
 Paolo D'Elia and Family
 Tom and Julia Della Maestra
 Delta Pi Sorority
 Derek and Louise Dermott
 Desjardins Financial Securities and
 Investments
 Detour Gold Foundation
 Michael and Julie Devine
 Peter and Anna Di Giuseppe
 Primo I. Di Luca
 Dilawri Group of Companies
 Diversified Business
 Communications - Canada

Division of Ocular Oncology,
 Princess Margaret Cancer Centre
 Doctors of Cancer Surgery, UHN
 Dofasco Inc.
 Perry Dolente
 Michael Dorfman
 Joan and Ernie Dottori
 David and Arlene Dougall
 Cameron and Lynn Douglas and
 Family
 Robin and Bill Downe
 Downsvie Kitchens Ltd.
 Duboc Family
 David Dulberg
 Dundee Corporation
 James and Lucette Dunlap
 Paul and Teresa Dykeman
 Mildred Eady
 Lawrence Arthur William East
 Eastern Construction
 Joan and Hy Eiley
 EMD Sorono Canada
 Luise Enderle
 Ermenegildo Zegna
 Escada
 Paul and Brigitte Estey
 Jim Estill
 Exel Inc.
 The Faas Foundation
 Joseph Fehrenbach
 H. Lawrence and Beverley Fein
 Bernard Feinstein
 Fiera YMG Capital
 Fire Services Credit Union
 Susan and Ron Flam
 Stephen Fleisher
 John Ferguson Flinn
 Michael Flood
 Fondation Les Roses De L'Espoir
 Foresters Financial
 Fornax Construction Inc.
 Four Seasons Drywall
 Robert Francki
 George Frankfort
 Peter L. Fraser
 Fraser Milner Casgrain
 Sherri Freedman and Jeff Hoffman
 Ron and Hedy Frisch
 Frito Lay Canada
 Juliana and Johnny Fung
 Ann Gallie
 Dean Gangbar and Family
 Genentech Inc.
 Garnet Orin Gibbins
 Gib-San Pools Ltd.
 Leroy Percy Gillard
 Marianne Girling
 Globe and Mail
 Hanna Goldman
 Edwin A. Goodman
 Goodyear Canada Inc.
 Mary Gospodarowicz
 Gertrude Milrod Gotlib
 Milli Gould

Graham Munro Charitable
 Foundation
 Laura Kathleen Gray
 Bronislaw Grech
 Stewart and Jean Green
 James Greenan
 Heather and Robert Grindley
 Elizabeth Groves
 GSO GF Acquisition B.C. Ltd.
 Brian Guenther
 Guild Electric Limited
 Jack and Judy Gwartz
 H.G. Developments & Consultants
 Ltd.
 In Honour of Stella Hachey
 Tracy A. Hackett
 Hal Jackman Foundation
 Mildred Eady
 Helen E. Hall
 Richard and Nancy Hamm
 Hugh Hanson
 Mildred Harlock
 The Harold Crabtree Foundation
 David and Melanie Harris
 M. Marianne Harris
 William and Patricia Harris
 David and Lenore Hawkey
 Healthcare Materials Management
 Services (HMMS)
 Heat & Frost Insulators & Asbestos
 Workers Local 119
 Heavy Construction Association of
 Toronto
 The Hebel Family Foundation
 George and Linda Heller
 Henry D. Hendershot
 Erna Henry
 Jeffrey and Elizabeth Herold
 High Vail Systems Inc.
 Timen P.Ho and Ling H. Ho-Lai
 The Hockey Family Foundation
 The Hogarth Family Foundation
 Geoffrey Hole
 Holt Renfrew
 Donald Lewis Honey
 Pamela Mary Hosang
 Heather Howard
 Robert Huse
 Husky Food Importers & Distributors
 John and Sydney Huxley
 IA Clarington Investments Inc.
 IBEW Toronto Local 353
 Indigo Books & Music Inc.
 Industrial Alliance
 Industrial Alliance
 Interlink Community Cancer Nurses
 International Association for
 Healthcare Security & Safety
 The International Group Inc.
 International Union of Painters &
 Allied Trades
 Investors Group Financial Service
 Inc.
 Irene Reingold Family Foundation
 Dr. Morton Reingold

Jonathan Irish
 Rita Ann Irwin
 Islington Golf Club Ladies Section
 J. Armand Bombardier Foundation
 J.D.L. Development Limited
 Jack Link's Canada Company
 Bonnie and Terry Jackson
 Evelyn and Paul Jacobs
 Mary Janigan and Thomas Kierans
 JE Fininvest Inc.
 Herman Karlo O. Jensen
 Heldur Joe
 Brian Johnstone
 John Johnstone
 Joseph S. Stauffer Company
 Limited
 The Kaitlin Group Ltd.
 Michael S. Kalles
 Kalmar Family Foundation
 Gary Kaplan and Rhonda Sheff
 May and Fred Karp
 Karsley Investments Ltd.
 E.S. Kaufman and Family
 The Kavelman-Fonn Foundation
 Mary Isabella Keemar
 James Kennedy
 Beverley and Ed King and Family
 Kevin Kirby
 Joel Kirsh
 Richard Knowles
 Murray and Marvelle Koffler
 George and Rachel Kostman
 Paul and Rhonda Krandel
 KRG Children's Charities
 Gordon and Joyce Lackenbauer
 Ladies Auxiliary of the CIBPA
 Ladies Out Laughing
 Laidlaw Inc.
 Tri Lam
 Judy and Bruce Langstaff
 Jocelyne "Jo" Laniel
 In Honour of Diane Lanthier
 Normand Laperriere
 The Lawson Foundation
 Stuart and Victoria Lazier
 Grant Leach
 Harley Ulster and Cindy Leder
 Esther Lee
 Johnny Lee
 Reva James Leeds
 Mary Legris (Legree)
 The Leonard & Felicie Blatt
 Foundation
 Leon's Furniture Limited
 The Les and Minda Feldman
 Charitable Foundation
 Jules Lewy and Joanna Slone
 Lifelong Nutrition Inc.
 Lifford Wine Agency
 Charles and Janet Lin
 Lindwood Custom Homes
 Fei-Fei Liu
 Leslie Llewellyn
 The Lloyd Carr-Harris Foundation
 Nancy Lockhart and Murray Frum

In Honour of Jack Lockwood
 Audrey Loeb and David Ross
 Alice Carrington Logan
 Marjorie Logan
 Lombard Canada Ltd.
 John A. Long
 Loretta's Legacy Foundation
 A. Benson Lorriman
 Isabel Losch
 Louis Garneau Sports Inc.
 LTP Sports Inc.
 M.A.M. Group Inc.
 Mary and Garth MacGirr
 Bruce and Paula Mackay
 Ann and Douglas Mackay
 Helen Mallovy Hicks
 Leslie Mandelbaum
 Mantella Corporation
 Pierre Marcoux
 Rick Marshall
 Irene May Martin
 Irving and Esther Matlow
 Lloyd G. Matthews
 Mauran Family
 Kenneth and Sheila McArthur
 William McConnell
 Thomas and Lynn McCulloch
 Clarence and Mary McFall
 Robert McFarland
 James Hubert McLean
 The McLean Foundation
 McMillan Binch
 Stella Donalda McNichol
 Chris McPhee
 Ronald John Charles McQueen
 Mechanical Contractors Association of
 Toronto
 The Mendelson Family Foundation
 Mercedes-Benz Financial Services
 Canada
 John Millyard
 Myles Mindham and Stephen Gilles
 Frances and Clive Minto
 Minto St. Inc.
 Sandy Minuk
 Florence Minz, Daniel Geneen &
 Julian Geneen
 George Mitchell
 Bruce Miyashita
 David Moore
 Malcolm Moore
 Moore Wallace Inc.
 Moosehead Breweries Limited
 Margery Moreland
 Morguard Corporation
 The Morrison Foundation
 Kathleen E. Morritt
 Mosaic Sales Solutions (Mosaic
 Cares)
 Patricia and Thomas Muir
 The Multiple Myeloma Research
 Foundation
 Peter Murdoch
 Sheila Murray
 Patricia J. Myhal

Wolf and Dora Naiman
Nathan and Lily Silver Family Foundation
Joanne Nemeroff
Nesbitt Family
Norman J. Newell
Susan Newman
NHL Foundation
Doris Nofall
Philip and Joan Norris
Lesley E. North
J. Patricia Nowlan
Nucap Industries Inc.
Oakdale Golf and Country Club Ltd.
Moira and John O'Bryan
Ogilvy Renault
Mary Olesky
Shelagh and John O'Neill
Ontario Acoustic Supply Inc.
Ontario Association of Demolition Contractors Inc.
Jeffrey Orr
The Oshawa Golf Club
Gordon P. Osler
Michael Rolland
Gilles Ouellette
Oxford Properties
Steven and Shawna Page and Family
Colleen and Christopher Paige
Joe and Lucie Pal and Family
Bernice and Charles Palef
Gerald Panneton
Paragon Protection Ltd.
Parrish & Heimbecker, Limited
Parsons Behle & Latimer
Bruce Patterson
Eleanor and Laurence Pattillo
Paul Flumian Grand Prix
PCL Construction Canada Inc.
Pearson Canada Social Committee
Brian Pendleton and Chad Goldman
Eleanor Martin Penman
PepsiCo. Canada
The Peter and Melanie Munk Charitable Foundation
Peter Mielzynski Agencies Ltd.
Reta May Pettet
Philips Medical Systems Canada
John and Andrea Pierson
Pinchin Ltd.
Jack and Connie Pires
Pizza Nova
Polar Asset Management Partners
Pollock Family Foundation
Katharine Joyce Pomanti
Potash Corp.
M. Hope Powell
Ian and Cathy Preston
Robert Prittie & Shirley Prittie
Procter & Gamble Inc.
Professional Warehouse Demonstrations
Province of Ontario
Provincial Building & Construction
Trades Council of Ontario

Pusateri's Fine Foods
William Quinn
R.L. corporation
David Race
Ann Rastin
Ratech Electronics Ltd. In Honour of Frank A. Rago
Sara Ratney
RBCAP CFBRC
Paul Reaburn
Florence Reilly
Ronald Rein
Residential Construction Council of Ontario
Revlon Canada Inc.
Rexdale Food Specialties Ltd.
Family, Friends and Colleagues of Christopher G. Riggs
Wayne Robbins and Family
Alice Roberts
Peter and Tina Rocca
William Michael Roche
The Roel C. Buck Family Foundation
Rosa Roessle
Michael Rolland
Roman Metal Fabricating Ltd.
Mario Romano
Annie Ropar
Jack and Judith Rose
Family and Friends of Ethel Rosen
Bruce Ross
Richard Ross
Roy Thompson Hall
Royal & Sun Alliance Canada
Adam Rubinoff
Rubinoff Family Charitable Foundation
Runner's Choice Promotions/RCP Int.
Derek B. Russell
Nancy Ruth
Eamon Ryan
Carol Rykert
S & C Electric Canada Ltd.
S.I.C. Holdings Inc.
Marvin and Victoria Sadowski
Mohit and Kathleen Sahn
Salit Steel
Sam and Ida Ross Foundation
Samuelsohn Limited
Family and Friends of Tito Sansalone
John Saunders
Sceptre Investment Counsel Ltd.
Patricia Anne Schick
Schick Canada
Carol and Lionel Schipper
Clare and Mark Schmehl
Schneider Electric Canada Inc.
Rolf Schoene
Eva Anna Schutz
Charles and Mina Schwarz
Hazel Barr Scott
Rohit Sehgal and Family
Adam Shapiro

David Shaw and Gary Miller
Shaw Industries Ltd.
Shawneeki Golf Club
Gerald Shear
Shearman & Sterling LLP
The Shen Family Charitable Foundation
Sherritt International Corporation
Owen Shime
Alex Shnaider
Yuen Che Sik
Florence and Al Silver
Mark and Catherine Silver
Sid and Sue Silverberg and Family
Randi Silverstein
Murray and Mary Sinclair
Martin W. Skoczynski
Paul and Carol Slavens
Slices for Smiles Foundation
Worts Lennox Smart
Linda Elizabeth Smithers
Jean Smith
Teresa Mary Smith
Sam Sniderman and Janet Mays
Solomons Family
Harold and Mynne Soupcoff
Spectrum Realty Services Inc.
Spidertech Inc.
Eric Sprott
Wayne Squibb
St. Joseph Family of Companies Foundation
St. Lawrence Cement Inc.
Len and Liz Stanmore
Donna Steck and Family In Honour of Our Beloved Husband and Father
Brian Steck
Stikeman Elliott
Ian M. Stobart and Norma Stobart
Strachans s.a.
Elsa and Ted Stringer
Suncor Energy Products Inc.
Sunset Flora Builders Corp.
SunSmart Melanoma Foundation
Symcor Inc.
T.S.X. Group
Take Credit
Pak Ming Louis Tam
Tse King Yiu Tang
TEKK Construction Group Ltd
R.L. Temple
TerSera Canada Inc.
Lilian Mary Eleanor Thomas
Marie Ella Thompson
Marjorie Thomson
Carol and Lionel Schipper
Thomson Reuters
Tippet Foundation
TMX Group Inc.
Tomkins Gates Foundation
The Toronto Crown & Bridge Study Club
Toronto General Hospital - Pathology Association
Tour East Group
Trans Power Utility Contractors Inc.

Transcanada Pipelines
Trinity Development Foundation
Robert Turk and Julie Feldman
U.A. Industry Enhancement
UCC Press
Unifor Social Justice Fund
Unilever Canada Limited
University of Toronto Press
Incorporated
Valterra Landscape Contractors Inc
Gino Vettoreto
Vibro-Acoustics
Vito Colucci
Vonality
Ronald and Faye Wagner
Carolyn Kent Waite
Elizabeth Joyce Walker
John H. Watson
WAYFF Global Ltd.
In Honour of the Wonderful Life of Percy Weinstein
Seymour Weinstein
Eric Weir
Michael Wekerle
Marion Jean Wellwood
In Honour of Angela Werner and Wanda Harrison
Weston Flooring Ltd.
Eric Wetlaufer
William White
Clifford Whittall
Sarah Wiersma
Michael Williams
Isabel Willigen
Marjorie Laura Howard Wilson
Judy Winberg and Andy Pollack
Sylvia Winestock
Gale and Jerold Winter
Steven Wolfe
Women's Ad Club of Toronto
Frank and Juliana Wong
Ernest Wood
Marjorie Wood
Woodbine Entertainment Group
Jindara Yang
Yanovski Family
Robert and Terry Yanowski
Wenda Young
Zeidler Partnership
Bardya Ziaian
Bella Ziering-Lando
Charles Zuckerman

BUILDER

\$25,000-\$49,999

1393838 Ontario Limited
1582568 Ontario Inc
1832 Asset Management L.P.
2383570 Ontario Inc.
683731 Ontario Limited T/A Mach II Press
7347898 Canada Inc.
A Cure For Life Group

AA&A Diamonds
Hossein Abhary
Darren Ablett
Hyman and Phyllis Ackerman
Pauline Adams
Renee Addison
ADP Canada
Advanced Agro Enterprises Limited
Aecon Construction & Materials Ltd.
Lorraine Ailles
Aimia Inc.
Ajax Lions Club
Alberga Family Charitable Fund
Albert and Temmy Latner Family Foundation
J. A. Alexander
Alexander E. Grossman Foundation
Algo Industries
Mohammad Alkari
Allan and Susan Fenwick Charitable Foundation
Allangrove Investments Limited
Jan and Keith Allin
Allseas Fisheries Inc.
The Allstate Foundation of Canada
Francis and Vivian Allwood
Amalfi Home Building Inc.
Jean Anderson
Merryl Anne Anderson
Santina Andrighetti
Anton Manufacturing
Aon Re Canada Inc.
Bunnie and Ronald Appleby
Roman Arbesman
Carolyn Archibald
Carrie Amelia Arksey
Arnold & Leona Finkler Family Foundation
The Arrell Family Foundation
The ASCO Foundation
Ronald William Atkinson
The Atlas Corporation
The Audrey & Donald Campbell Foundation
Automated Interiors Inc.
Autoplanet Group Inc.
Verna Aziz
The B.A. Himel Family Foundation
Cherly Babcock
Shane Baghai
Jehan Bagli
Rouein Bahmanian
Michael Baker
Raff and Frank Baldesarra
Helen G. Balfour
Carol and Stan Banach
Diponkar Banerjee
Banjo Inc.
Lawrence Barakett
Barberry Realty Corporation
Barrday
Barricade Traffic Services Inc.
John and Betty Barrons
Betty Barrons

Tammy Baruch
Bath & Body Works Canada
Baywood Homes
BBM Excavation Company Ltd.
BBS Securities Inc.
Beach and Associates Ltd.
M. Kelly Beales
Paul Beaumont
Beaver Valley Ski Club
James Thornton Begg
Doug Bell
Helen Isobell Bell
Ron Belluomini
G. Belz
Benefit Plan Administrators Ltd.
Jalynn H. Bennett
Beverley Bernier
Coleman and Evelyn Bernstein
Andrea Bezzak
BFI Canada Inc.
Keki Bharucha
Diana Billes
David Birkenshaw
Jane Black
Ronald Henry Blackall
Geoffrey Bledin/Equitable Trust
Bliss Photography
Jack and Kathy Bloom
Ida Bloom
Oliver Bock
Gordon J. Bogden
Boiler Inspection & Insurance Co.
Janet L. Bomza
Borges Foods Ltd.
Napoleonas Borisas
Robindra N. Bose
Ron Bouckley
Patricia Bowles
W. Melville Boyce
Joan Helen Brahm
Krishna Brahmachari
Brainchild Foundation
Brampar Building Supplies Ltd.
Jason Brass
Brenda Brazier
Robert Breadner
Albert Victor Brereton
Kathleen Bresnahan
Brian Domelle Enterprises Ltd.
James Brierley
Mark Brillon
George C. Britton
Broadridge Financial Solutions
Charles R. Bronfman
Lesley and John Brough
William P., Gail and Billy Brown
Beverley and Harold Brown, Faye and Herman (Sonny) Goldfarb
Penny Brown
Violet, Sharon, and Janice Brown
and Brian Ravok
Brown Window Corporation
Browns Shoes Charitable Foundation

Bruce Wilson Landscaping Ltd.
Andrew Buchan
The Buckingham Charitable Foundation
William Buckley
Miriam Bueno
Building Owners and Managers Association
The Bulhoes Family
Constance Olga Bourdignon
Burgess
Darlene Burnham
Elizabeth Burrridge
Joan Bush
The Butcher Shoppe
C.A. Delaney Capital Management Ltd.
Cadillac Fairview Corporation Limited
Mark Caiger
Mary Calder
The Family of Sandra Lillian Campbell
Canaccord Genuity
Canada Group Inc.
Canadian Amyloidosis Support Network Inc.
Canadian Association of Medical Oncologists
Canadian Hospital Specialties Ltd.
Canadian Mesothelioma Foundation
Canadian National
Canadian Retinoblastoma Society
Canamould Extrusions Inc.
Canarm Ltd. J. Cooper
Cancer Care Manitoba
Gordon F. Canning
Cardano
Robert Carew
Jacqueline Carl
Michael Carnegie
Carol Electric Inc.
Patrick and Marley Carroll
Walter Carsen
Mary Carson
Casco Inc.
Charles Catton
CatWalk Cure
CBRE Limited
CCL Industries Inc.
Celestica Inc.
Central Fairbank Lumber
Centrecorp/North American Development Group
Centura Tile
Wallace and Clarice Chalmers
Vicky Mei Chun Chan
The Chandaria Family and Conros Corporation
Pei C. Chang
William B. Chapman
Kevin Charles
Allan C. Chartrand
Eddy Chau
Dallas and Linda Cheevers

Jadela Sara Chen
Shan Cheng
David Chernos
Chiovitti Banana Co. Ltd.
Chiros Care Foundation
Chubb Insurance Company of Canada
Cinitel Realty Ltd
Citi Group, Unitrax Development
Citibank Canada
City of Toronto Council
Clarica Life Insurance Co.
John and Anne Clark
Ethyle I. Clark
Judith and Kenneth Clarke
Clarus Securities Inc.
John and Pattie Cleghorn and Family
Sheila Clotworthy
Clublink Corporation
James Charles Clutchey
Gregory Cochran
Beverley and Sam Cohen and Family
Marshall and Judith Cohen
Mitchell Cohen
Dan Coholan
Ellen and Albert Cole
Collectiva Class Action Services Inc.
Earlaine Collins
Luciano and Paola Colozza
William E. Colwill
Combe Charitable Trust
Combined Insurance Company of America
Commerical Mechanical Services Ltd.
Completely Wired Corp.
ConAgra Charitable Trust
Leo H (Ted) Coneybeare
Confederation Freezers
Paul M. Conway
Cooltech Air Systems Ltd.
Lorraine and Joel Cooper
Marilyn Cooper
Ellen Violet Cooper
Cooper Equipment Rentals
The Co-operators General Insurance Co.
Tami and George Cope
Family and Friends of Maxine Corbett - MAX-IMIZE
Louis Cordeiro
Core Oncology
Olga and Warner Cowan
Helen V. Crawford
Creaghan McConnell Group Ltd
Edie Creed
Norman C. Crook
Ken Crystal and Lynn Posluns
Culinary Destinations Ltd.
Elaine and Jack Culiner
Deborah Cumming
Bernard Cummings and Radiation Oncologists
Teri Currie
Mark and Ann Curry

Michael La Patriello Fund
 Michael Ryan Leal Fund
 Daniel Mida
 The Miller Tavern
 Elizabeth A.Milne
 Michael Milosevic
 Tom Milroy
 Milton and Gwen Yacht Family Fund
 Mark Mincer
 Mirolin Industries Corp.
 Bruce H. Mitchell
 Mitsubishi Electric Sales Canada Inc.
 Neda Moeini
 Ruth Mogil
 Tania Molinaro
 Jimmy Moniz
 Marguerite Moore
 In Honour of Lisbeth Moore
 Geoffrey Moore
 Lesley Morison
 David Morrison
 Kathleen and Scott Morrison
 Mortab Limited
 In Honour of Liliانا Josephina Morvay
 Lynn Miller
 Mosaic Cares (Mosaic Sales Solutions Canada)
 Motley Rice LLC
 Moto Amore
 Multiple Myeloma Canada
 Carla Murphy
 Glenn Murray
 Freda Ariella Muscovitch
 Steven Muzzo
 Myer Salit Limited
 Arnold and Libby Naiman
 Alexei Nakonechnyi
 Nancy Tarek
 Julie Naruse
 Ruth Naruse
 Nashville Developments Inc.
 National Cancer Institute of Canada
 Nat'l Conference-Community Cancer Program
 Neelands Group Limited
 Nelk Inc.
 Robert Nelson
 New Enterprise Garth Moving Inc.
 New Solutions Financial Corp.
 New York Fries South St.Burger Co.
 The Neziol Group
 Gwen Ng
 Tommy Ng
 Stanley Edward Nicolle
 Arnold James Noftall
 Noreen Fraser Foundation
 The Norman Black Foundation
 Normerica Inc.
 Merlyn North
 Northam Realty Advisors Limited
 Northeastern Ont. Regional Cancer Centre
 Northleaf Capital Partners Ltd.
 Nostrade Franchising

Nu-Mode Dress Co.
 Marlene Nylassy
 Avril Louise O'Brien
 Allan and Lesley Offman
 Alanne O'Gallagher
 Sharon O'Gorman
 David and Gwen Oliver
 Ursula Margot Ollesch
 Friends and Family of Louis Y. Ongpin
 Ontario Council of Painters
 Ontario Kinesiology Association
 Ontario Sheet Metal Worker's and Roofers Conference Inc.
 Opus Homes Inc.
 ORC Foundation
 Orpheus Investments
 Steven Hurowitz and Diane Osak
 Blair Osborne
 In Honour of Beryl O'Shea
 Brian O'Sullivan
 Jean Elizabeth Oswald
 Amit Oza
 Padulo Integrated Inc.
 G. Palazzo
 Panalpina Inc.
 Irene Pantalone
 In Honour of Walter B. Pape
 Paradigm Capital Inc.
 Allen E. Parks
 James Parks
 Parrish & Heimbecker, Limited
 Graziella and Beppino Pasquali
 Andrew Pastor
 Frank Paszat
 Nilesch Patel
 Patene Building Supplies Ltd.
 Patrick and Barbara Keenan Foundation
 Pavé-Al Limited
 Olga and Nikolay Pavlen
 David G. Payne
 PBS Building Supplies Ltd.
 PCL Constructors Inc.
 Peter Pearce
 John Pearson
 Israel Pelc
 Pembina Pipeline Corporation
 Paul Penna
 Brian Penny
 Performance Auto Group
 Marie Perry
 Dorothy Perry
 Pesca Builder Corp.
 Lino Pessoa
 Peter Ruby Professional Corporation
 Constance Isobel Peters
 Anne and Henry Peters
 Pfaff Porsche
 Pharmaceutical Partners of Canada Inc.
 Pharmascience Inc.
 Phenomenome Discoveries Inc.
 Philip J. Solondz Family Foundation
 John Philp
 Alfie and Anna Pierri

Charles Eric Phil
 Richard Pilosof
 Robert and Liane Piltz
 Family and Friends of Nada Pehar
 Polar Securities Inc.
 Murray H. Pollitt
 Power Corporation of Canada
 Powerstream & Transpower
 PowerStream Inc.
 Maurice Preston
 Prete Family
 Priestly Demolition Inc.
 Princess Margaret Cancer Centre - Pathology Associates
 Leland Arthur Prittie
 Progress Luv2Pak International Ltd.
 Martin and Ellen Prosserman
 Tyler Puley
 Nick Puopolo
 Quality Custom Blending Limited
 Queen's Players Toronto Theatre Group
 Patricia Quigley
 Elaine and Don Rafelman
 Oskar and Esterita Rajscky
 Ralph Lauren Corp.
 Frank and Sharon Ramagnano
 Rapini's Ristorante Ltd.
 Raysearch Laboratories
 RCC Group Inc.
 Dan Rees
 Registered Nurses Association of Ontario
 Margaret W. Reid
 John Reilly
 Remington Homes
 Anne-Marie Renaud
 Renata Humphries
 Residential and Civil Construction Alliance Of Ontario
 Russell A. Reynolds
 Barry Reznick
 Elizabeth Rhind
 Warren James Rhodes
 Friends and Family of Marilyn Ricci
 Elsie A. Richardson
 James Rickard
 Riedel Crystal of Canada
 Lance Rishor
 Jo-Ann E. Ritchie
 Barb and Ced Ritchie
 David Ritchie
 RLS Charitable Giving Fund
 Roadside Paving Ltd.
 Antia Robins
 Fred Sherratt
 Betty Rodger
 Steve Rodriguez
 The Rogan Foundation
 Richard Rooney
 Jack and Judith Rose
 Rose Reisman Catering
 Paul Rosen
 Simon Rosen
 Philip J. Solondz Family Foundation
 Kenneth and Helen Rotenberg
 Nathan Rothwell

Sandra and Joseph Rotman
 Myrtle E. Rous
 Roy Foss Motors
 The Royal Canadian Legion General Wingate Branch 256
 Royal Laser Mfg Inc.
 Royal Military Colleges of Canada Foundation Inc.
 Michael J. Rozario
 Laurence and Mark Rubin In Honour of Karen Meltzer
 Ida Sarah Rubinoff
 The Family of Melvyn Paul Rubinoff
 Sheila Rubinoff
 Barbara Russell
 RZ Capital Inc.
 Paul Sabourin
 Susan Sacchi
 Rose Salamone
 The Salden Foundation
 Salesforce.com
 Maria Sherma Samuel
 Henry Sanchez
 Charles Robert Sanderson
 Sandstrom Trade and Technology Inc.
 Sandylion Sticker Designs
 Sanpaul Investments Ltd
 Giancarlo Sansalone
 Angelo and Yvette Santorelli and Family
 Lolita and Matthew Savory
 Andrew G. Scace
 David Scandiffio
 Manny and Lorraine Schacht
 Michael Schatz
 Jan Scheeres
 Schneider Electric Canada Inc.
 Schumacher Family Foundation
 Jeffrey Schwartz
 Martin Schwarz
 Robert and Doreen Scolnick
 Deborah Scott
 Seagate Contract Management Ltd.
 Erin Searle
 Charlotte Elenor Selby
 Rose Helen Seli
 Service Results Technology Inc.
 Barry Shafran and Denise Amram
 Ashish Sharma
 Isadore and Rosalie Sharp
 Maureen Shaughnessy Kitts
 Shawn's Miracle Fund Mozersky Zand
 Margaret Sheppard
 Fred Sherratt
 Donna and Randy Shiff
 Shimmerman Penn LLP
 Shipp Corp. Ltd.
 Shiseido (Canada) Inc.
 Simona Shnaider
 Shoreway Flooring Ltd.
 Michael and Jackie Shulman
 Bruce Silcoff
 Murray Silverberg
 William John Kenneth Simpson

Esther and Ronald Sirkis
 Faida Smale
 David Smith
 Reginald Smith
 Roy Smith
 William Thompson Smith
 Smith Lyons LLP
 Smith Share Foundation Inc.
 Snap Promotional Innovators Inc.
 Fred Tanguay
 Sofina Foods Inc.
 In Honour of Sydney and Carol Solomons
 Soloway Wright LLP
 Soncin Construction Corporation
 Sonor Foundation
 Marisa and Edward Sorbara
 Peter Soumalias
 South Caledon Soccer Club
 Southam Inc.
 Specialty Building Products Ltd.
 Speedy Muffler King Inc.
 Stephen D. Sperling
 Jeffrey Spinks
 Spirax Sarco Inc.
 Sport Property Mgmt Group Inc.
 S.R.T. Med-Staff
 St. Dunstan of Canterbury Church
 St. Michael's College School
 St. Michael's Hospital Foundation
 Helen Allen Stacey
 Mary Patricia Stagg
 Sheila Stahl
 Starfield Lion
 Starlight Group Property Holdings Inc.
 State Building Group
 Ken Stathakis - The Octagon Restaurant
 Gaye and Andy Stein
 Bonnie Stephen
 Naomi Stephens
 Samuel Stern
 Gary and Julie Stern and Family
 Anne Robertson Steven
 Irene May Stevenson
 Bert and Barbara Stitt
 Alan and Cheryl Stoddart
 Strada Aggregates
 Bertha Anna Belinda Stuart
 Mary E. Stuart
 Barbara Stymiest
 Sudbury Lime Limited
 Sudbury Regional Hospital
 Shiori Sudo
 Andrea and Aubrey Sugar
 Barbara Sugar
 Fahim Sultan
 Sun Media Corporation
 Sunnybrook and Women's College Health Sciences Centre
 Sunoco Inc.
 Sunspace Modular Enclosures Inc.
 Superior Plus Corp.
 Swarovski Canada Ltd.

Marvin Swirsky
 Swiss Herbal Remedies Ltd.
 Swiss Reinsurance Company Canada
 Sue Symington
 Syntio Group Inc.
 The T.R. Meighen Foundation
 Bonnie Hung Ta
 Tangerine Investment Funds Ltd.
 Fred Tanguay
 Remembering Sister Mary Tasker
 Frank Tatone
 Stan and Gloria Taylor
 Ashley Taylor
 Garth Taylor
 Jadwiga Taylor
 Roy Taylor
 The Taylor Family
 Diana Taylor-English
 Derek Teevan
 Tina Tehranchian & Shahdad Bekhrad
 James Temerty
 Mark Teskey
 Roy Teskey
 Stanley C. Tassis, Our Hero Lovingly Remembered
 Ajit Thagad
 Therapure Biopharma Inc.
 Kevin Thistle
 Marcelle Gai Thomas
 Stanley and Adrienne Thomas
 In Honour of Susanne Thomas
 Janis Ann Thor
 Throat Threads Apparel Inc.
 Frederick Albert Tilston
 Timex Canada Inc.
 Tomintoul Investments Limited
 Jeff Tonken
 Tony Koukos World Travel Photography
 Lorna Elizabeth Tooker
 Toronto Civic Employees Union
 Local 416
 Toronto Hydro Employees' Charity Trust
 Toronto Maple Leaf Hockey Club
 Toronto Professional Inc.
 Alex Tosheff
 Townwood Homes Inc.
 Trans Power Utility Contractors Inc
 Transamerica Life Canada
 Transcontinental Media Inc.
 Trans-Ontario Ceiling & Wall Systems Inc.
 Travelers Guarantee Company of Canada
 Travos Automotive Inc.
 Trevisana Kitchens & Interiors
 Tridel Corporation
 Eric Tripp and Maria Smith
 Triumph International (Canada) Inc.
 TrizecHahn Corporation
 Terri Truscello
 Gerald and Nancy Tsai

Richard Tsang
 Peter Tse
 Susan O'Neill Tsicrycas
 TSL Limited
 Richard S. Tucker and Lily Dabby
 Tuckernuck Management Services Inc.
 Tuffillo Construction Corp.
 Aubrey George Tullett
 Philip and Nanci Turk
 Michelle Ummels
 Union for International Cancer Control
 University of Alberta
 Upper Crust
 Upper Lakes Group Inc.
 Urbacon Limited
 Urban Painting & Decorating Ltd.
 Jean Van Cauwenberghe
 Van der Graaf Inc.
 John Van Netten
 Bill & Sarah Vanderburgh
 Vantage Insulation Ltd.
 John Varley
 Anne Nitsa Vasoff
 George Vassallo
 Verax Inc.
 Annette Verschuren
 Yvonne Vetere
 VHL Alliance
 Viana Roofing & Sheet Metal Limited
 Lou and Lilyan Vigoda
 Visa, Inc.
 Nancy J. Vivian
 Vivian and David Campbell Foundation
 Michael Volpatti
 Votorantim Cimentos
 Darko and Erika Vranich
 Mary-Alice Vuicic
 The W.P. Scott Charitable Foundation
 Elliott and Helene Wahle
 Lorie Waisberg
 Paul Waitzer
 Frederic Waks
 Walden Services
 Gerda Zettler Waldhart
 Mary Elisabeth Wallace
 Peter and Kimberlee Wallace
 Gary Bourgeois and Sheilah Wallin
 Craig S. Walters
 Shannon Walton
 Anne and David Ward
 Gwedolene Stella Ward
 Pdraig and Marian Warde
 Ralph Ross Ware
 Marjorie V. Waters
 Ron Waters
 Albert Watson
 Watson Limited Partnership
 Neville Marcus Wear
 Ralph Ross Ware
 Marjorie V. Waters
 Ron Waters
 Albert Watson
 Watson Limited Partnership
 Neville Marcus Wear
 Diana Weatherall
 William Webb
 Alan James Wedlock

Susan Weisbarth
 Peter Weiss
 Welded Tube of Canada
 Wellpoint Health Services Inc.
 Woodrow Wells
 Brigitte Westaway
 Westdale Properties
 Westwind Partners Inc.
 Gabriele Westwinkel
 Katherina Kaiser Wheatley
 Kathryn White
 Whitehorse Liquidity Partners
 Jack Whiteside
 Tracey Wilder
 David and June Williams
 Damon Williams
 Jane Wilson
 Elizabeth Wilson
 Lynn Wilson
 Timothy Wilson
 Joan Windeler
 Ronna Winkler
 Charles M. Winograd
 In Honour of Earl Charles Winter, Charles Winter, Moses Wolfson, Abraham ("Art") Wolfson and Rachel Winter
 Lynda Wise
 Fern and Herb Wisebrod
 Jack and Nan Wiseman
 Stephen Witts
 Greg Wolfond
 Elsie Wolnity
 Kan Sum Wong
 Sheila Wong
 Shun Wong
 Ella Wood
 Robert Wood
 Mari-Jayne Woodyatt
 Jim Wortzman and Jaimie Robins
 Arthur Raymond Wright
 Sarah Wright
 Donald Robert Wylie
 Xerox Canada Ltd.
 Xplornet Communications Inc.
 Michael Yan
 Tuan Yeap
 Lim Yeoh
 YMG Private Wealth Management
 Nanci York
 York Marble Tile & Terrazzo Inc.
 Nancy V. Young
 Frances Joyce Young
 Ginette and Donald J. Young
 Sam and Shirley Young and Family
 Young & Rubicam Limited
 The Young Family Foundation
 Elisse Zack
 Dov Zevy
 Lawrence and Linda Zimmering
 Carole H. Zucker
 Richard Zurawski
 Zurich Canadian Holdings Ltd.
 Zzen Group of Companies Ltd

JCB Grant Society

April 1, 2019 to March 31, 2020

Frances I. Masefield Acheson
Val and Ernie Adriaanse
Scarlat Albright
Bruce Alexandor
Omar Ali
Nicolas Alipheris
Paul and Sheila Alofs
Keith Ambachtsheer and Virginia Atkin
Roger Andersen
Shirley Arnold
Chuck Arrigo
Norman K. Ashurst
William F. Badke
Jack and Patricia Barclay
Katharine E. Barilla
Yee Bell
Francesco Benichasa
Roslyn and Bernard Bennett
Beulah Besharah
Rita Bette
Aruna Bhatnager
Rosa Bianca
Nicholas and Zachary
Blease-Trepanier
Michel C. Bois
Frank Bosco
Robindra N. Bose
John and Susan Bowey
Harold and Fredelle Brief
Beverly A. Briggs
Rob Bristow
William P., Gail and Billy Brown
Ruth M. Buchanan
Joan and Jack Burkholder
Reta Burrows
David and Paula Butterfield
Laura and Sven Byl
Richard Cadieux
Irene Calo

Fausto Carbone
Gail Carman and Dave Hollingworth
Dorothy Carr
Christopher A. Carson
In Honour of Jim Chamberlain
Margaret E. Chapman
Paul Chen
K. Carol Christian
Joyce K. Chung
Valerie and James Clark
Anne Clements
Julie Colosimo
Luciano and Paola Colozza
Olga and Warner Cowan
Janice S. Crichton
Barb Crisp
Barry Crookes
Beryl Cruse
Enola Czech
Fern Daiter
Aspasia Dassios
Julie Davis
Shirl Davis
Jean Davison
Mary Dawkins
Tim Devlin
Joseph Di Geso
Daniela Di Giantomasso
Wilson G. Dow
Jessie L. Dowling
Diane N. Drotos
Rudy D'Souza
Joao J. Dutra
Linda Ecclestone
Naomi Eisenberg
Andrew Colwell & Richard Ellis
Leola English
Audrey Ennis
Margaret A. Evered
Patricia Ewart-McLean

Roy A. and Elizabeth J. Fawcett
Mike Scapicchio and Patricia Fazzari-Scapicchio
Joseph Fehrenbach
Lisa and Ron Feyerabend
Dalit Fichman
Madeline Fielding
Maria Filosa and Gino Ortuso
Leland J. Fisher
Patricia K. Ford
Jake E. Fowell
Linda J. Freedman
Sherrri Freedman and Jeff Hoffman
Sandra J. Frost
Larry and Eileen Fryer
Michelle Fuss
Anthony Fyles
Alex Gallagher
Kathy Gallivan
Monica L. Gaudry
Paul Gauthier
Marilyn Gazey
Ian Gibbard
Florence Gibbons
Karen Girling
Shirley Goldenberg
Lillian Gordon
Daniela Di Giantomasso
Carol Greenwood
Christopher G. Guest
Cathy Hale
Craig Hanna and Margaret Hanna
Doris Hansen
Kevin Harper and Victoria Clare
Elaine Dale Harris and Monte Hartley Harris
Helen Phebe Hatton
Sharyl Haynes
Lenard Haywood
Suzanne Hearn

David Hedley
Brian Hellyer
Patricia Henderson
Robert I. Hendy
Grant Hern
Joan R. Hickey
David and Louise Hilson
Timen P.Ho and Ling H. Ho-Lai
G. Holmes & D. Cormack
A. D. Holt
Bill and Karina Hope
Joan Pui-Ying Hosang
Peter Hume
Tommasino-Timpano Iozzo
Joan I. Jackson
Simon L. Jackson
Maureen James
Margaret Jenkins
Agnes Jenkinson
Nancy Jennings
Fran Johnston
Barry Jones
Lee-Anne Kant
Jeff Karl
Diane Karnay and Stuart Bollefer
Geraldine Kavanagh
Carla Keel
Grace Kelly
Nora Kent
Kathryn Kernohan
Andrea Kinch
Neville and Lorraine Kirchmann
Paula Kirsh
Selwyn and Pippa Kossuth
Sherry Kou
Vito and Catherine Labate
Margaret, Audrey and James Laidler
Harold Lane
Linda Langero
Colin Languedoc

Barry Lebow
Gail S. Leder and Daniel Z. Goodwill
Connie Lee
Joan and Bob Lehman
Kathleen D. Leslie
Charles E. Letman
Daniel Lichtman
Irene M. Lloyd
Debbie Locke
Audrey Loeb and David Ross
Margaret Jane Logan
Maria Loschiavo
Rita Louidor
Margaret Lynch
Mary and Garth MacGirr
Mr. and Mrs. John D. Mackay
John and Gail MacNaughton
Jaudon and Jasper Cobb Martin
Robert Martin
Antonio and Seli Masegosa
Dana Maslic
Aureade Massey
Jean Matlow
Doris McCartney
Janice McDonald
Paul McNab and Mary
Collins-McNab
Beverly McRae
Steve Merker and Cathy Buchanan
Louis Michael
Rosa Milano
Barbara Jean Miles
James Miller
Patricia Miller
Ruth Milne
S. Milne
John K. Mitchell
Lois Mitchell
Parbattee, Anthony and Sharon Mohip

Carla Monk
Doris J. Moore
Harold A. Morden
Eleanor Morgan
Brad Morris
Carol Morrison
Marlene Morris-Taylor
Miriam Mozes
Sanjib and Bharati Mukherjee
June Murdoch
Freda Ariella Muscovitch
Elizabeth (Libby) Mussell
Margaret and William Myers
Jill and Reed Nelson
Susan Newman
Pamela and Donald North
Betty-Lou Northway
Aimee M. O'Connor
Manuel Oliveira
Andrea Orr
Marie J. Overweel
Bill and Jan Paris
Marshal and Tina Partnoy
Robert L. Paterson and Larry J. Westwood
John Patterson
Colleen Peacock
Brian Pecic
Borge and Dianne Pedersen
Myta Peters
Stan and Helen Petrowski
Robert L. Pidgeon
Diana M. Plant
Sofia Polyanovsky
Karen M. Potter
Clare Price
Linda Puma
Abel Quintal
In Honour of Suzanne Margaret Ramsay

Kathryn and Julian Rance
Bernie Rees
John Reilly
Gladys Rennie
Edna Reynolds
Lionel and Helaine Robins
Charles H. and Kathleen A. Robinson
Marnie and Michael Rodgers
Betty Ross
Coleman Rotstein
Ross and Gwenda Roxburgh
Therese Roy
Marci J. Rubinoff
Ruth E. Russell
Cookie and Stephen Sandler
Patricia Sauerbrei
Idola G. Semple
Naju B. Shroff and Keki B. Shroff
Margaret Simmons
Graham T. Skells
Linda Sky Grossman
Alanna Smith
Thomas Smith
Helen Stark
Annabelle Stephens
D. Eleanor Stephenson
Elsa and Ted Stringer
Shannon and Micheal Stuart
Ann D. Sutton
Dorothy Sutton
Eva and Gabor Szekely
Richard F. Tayler
Douglas A. Taylor
Tina Tehranchian
Helen Tennyson
Frederick Tiley
Joan Tilt
Gordon Tozer

Mildred Trachtenberg
Jerry Trestik
In Honour of Beryl Elizabeth Trimming-Green
Gillian Tuffin
Jackie Tuffin
Belal Uddin
Nancy J. Vivian
Robert and Wanda Wagner
Lisa L. Weaver
Sophie Weimert
Vanessa Wellwood
Maryann Weston
Robert L. Paterson and Larry J. Westwood
Mary E. Whitaker
Linda Whyte
Charles T. Wilson
Debra Wilson
Jane M. Wilson
Norma and Sharon Wilson
Robert Elliott and Paul Wilson
Mary Winter
Jonathan Wisebrod
Susan McLean Woodburn
Donald and Janice Woodley
Betsy Wright
In Honour of Diana Wright
Donald A. Wylie
In Honour of Doris M. Riddell, her son Todd W.T. and her husband Ben Yacoub
Morden S. Yolles
Ginette Young
Chung-Fu Yu
Robert & Lois Yuill
Valentina Zatskoy Loper
John Zeger

Expendable Funds List

April 1, 2019 to March 31, 2020

Abbott Nutrition Survivorship Education Fund
 Adelson Foundation Fund for Ovarian Cancer Research
 Advanced Molecular Diagnostics Initiatives Fund
 Advanced Technology General Surgical Oncology Fund
 Agnico-Eagle Research Fund
 AI and Microbiome Program Fund
 AI Hertz Centre for Supportive and Palliative Care - Palliative Care Physicians
 AI Hertz Centre for Supportive and Palliative Care Fund
 The AI Hertz Urgent Care Facility Fund
 Allan and Ruth Kerbel Trust Fund
 Allan and Shirley Taylor Fund
 The Allison Family Airway Fund
 The Alofs Family Fund
 Amelia Plastina Breast Cancer Research and Equipment Fund
 Andrew and Barbara McIntyre Lymphoma Research Fund
 Ann and Irving Storfer Lymphoma Research Fund
 Ann Boroovah Endometrial Cancer Research Fund
 Anna-Liisa Farquharson Kidney Cancer Research Fund
 Arthur Cushing Multiple Myeloma Research Fund
 Barbara Lee MacFadyen Cartwright Cancer Research Fund
 Barnett Music and Art Program Fund
 The Beckie Fund for Breast Cancer Research
 Ben and Hilda Katz Charitable Foundation Fund
 Benny Libman Patient Care Fund
 Bhalwani Family Hereditary Cancer Fund
 Boehringer Ingelheim MP Innovation Project Fund
 Boraiah Sreeharsha Education Fund
 Boutillier Family Triple Negative Breast Cancer Research Fund
 Bram Appel Fund for Molecular Diagnostics in Ovarian Cancer
 Bruce Galloway Fund in Head and Neck Cancer Research
 Campbell Family Cancer Research Institute Fund
 Campbell Family Institute for Breast Cancer Research Fund
 Campbell Nursing Fund

Campbell Nursing Initiative Fund
 Canary Foundation Fallopian Tube Project Fund
 The Carlo Fidani Foundation Fund- Molecular Imaging Program
 CGI Group Fund
 Charles and Marilyn Gold Family Foundation Fund
 Charles Krowitz Burkitt's Lymphoma Research Fund
 Charlotte Belz Melanoma Research Fund
 Christopher 'Chip' Trueman Fund for Esophageal Cancer Research
 CMF (Canadian Mesothelioma Foundation) Education and Training Fund
 Coalition to Cure Prostate Cancer
 2012 Young Investigator Award Fund
 COBRA Trial Fund
 Crystal Breast Imaging Research Award Fund
 Cure for Lung Cancer Team Fund
 Daniel Alan Sheehan Brain Tumour Research Fund
 David and Paula Butterfield Ovarian Cancer Database Fund
 David and Sharon Aello Skull Base Fund
 David and Sylvia Cape Breast Cancer Research Fund
 David Cornfield Melanoma Research Fund
 The David Geneen Fund for Stem Cell Transplant Research
 David Shapiro Fund for Radiation, Chemotherapy and Nuclear Medicine Programs
 Dawson Family Research Fund
 Desmond and Pamela O'Rorke Drug Development Fund
 Diane Lanthier Nursing Care Fund
 Discovery Clinical Research Fund
 Domenic Dell'Elce Fund
 Donati Family - St. Michael's Majors Ovarian Cancer Fund
 Dorrance Drummond Family Fund
 Dr. Annie Smith Bear Fund for Ovarian Cancer
 Dr. Elzbieta Rosnowska-Perera and Dr. Norbert Perera Fellowship Fund
 Dr. Geoffrey R. Conway Chemotherapy Fund
 Ed and Fran Sonshine Ovarian Cancer Fund
 Edie and Eric Yolles Cell Therapy Research Fund
 Egan Head and Neck Cancer Radiation Fund

Elana Waldman Fund
 Elizabeth and Tony Comper MPN Program Fund
 Elsa and Ted Stringer Fund
 Elysa Lipson Endocrine Cancer Fund
 Epstein Family Research Fund
 Epstein GTX Research Partnership Fund
 Estelle Craig Family Fund
 Etta and Shiri Shastri Cancer Research Fund
 Farncombe Family Therapeutics Fund
 Frank A. Ragona Fund
 Freed Family Fund
 Friuli Cancer Research Academic Exchange Program Fund
 The Frontline Fund
 The Gary Bluestein Charitable Foundation Cell Therapy Fund
 Gattuso Rapid Diagnostic Centre Fund
 Gattuso Saight Personalized Cancer Medicine Fund
 General Electric Canada Inc. Fund
 George A. Cohon Fund for Reconstructive Surgery for Prostate Cancer
 Gerald and Paula Kirsh Family Fund
 Gerald J. Goldenberg Fund for Pancreatic Cancer Research
 Gerald Schwartz and Heather Reisman Liver, Pancreas and Biliary Centre
 Gerry & Nancy Pencer Brain Trust Fund
 Gerry Ruby Fund
 Giovanni and Concetta Guglietti Family Fund
 Goes Down Easy Cookbook Fund
 Gold Industry Fund to Support Personalized Cancer Medicine
 Goldie Risenman Fund
 Gordon and Donna Feeney HPB Surgical Fellowship Fund
 Gordon F. Mutch Research Fund for Leukemia
 Gordon Tozer Head and Neck Cancer Bio-Clinical Anthology Fund
 Greenberg-Ritchie Fund
 Greenpark Blood Transfusion Unit Fund
 GTx Program-Surgery-Engineering Support Fund
 Gucciardi Family Fund for Cell Therapy

Harley Ulster and Cindy Leder Multiple Myeloma Research Fund
 Harold and Eve Corrigan Family Cancer Research Fund
 Harrison McCain Foundation Radiation Training Program
 Haynes Connell Foundation Breast Cancer Fund
 HBB (Healing Beyond the Body) : Patient Support Fund
 Healing Beyond the Body Volunteer Program Fund
 Hertz Fund for Disorders of Vestibular Function
 Hillary Firestone Ovarian Cancer Research Fund
 Hold 'em For Life Breast Cancer Research Fund
 Hold'em For Life Award Fund
 Hold'em For Life Fellowship Cancer Research Fund
 Hold'em For Life Prostate Cancer Research Fund
 Ian and Anne Devine Fund
 Ian Lawson Van Toch Cancer Informatics Fund
 Ian Telfer and Nancy Burke Radiation Oncology Research
 Ian Telfer and Nancy Burke Thoracic Surgical Oncology Fund
 Ida Rubinoff Patient Support Fund
 IFSTC Mesothelioma Early Detection Study Fund
 Imperial Oil Foundation Mesothelioma Research Fund
 Isenberg Family Fund
 Issie's Quest for Ovarian Cancer Research Fund
 J. David and Jan Crichton Fund
 Jack and Esther Cole and Family Prostate Centre Fund
 Jack and Rose Wine Leukemia Research Fund
 Jack Weinbaum Prostate Prevention Fund
 Jaclyn Shulman Research Fund
 James Kinnear Fund
 The Janet D. Cottrelle Foundation Ovarian Cancer Fund
 Janet Rosen Fund
 Jim Chamberlain Sarcoma Research Fund
 Joan and Ken Taylor Multiple Myeloma Research Fund
 Joan and Weldon Levine and Family Fund for Myeloma Research
 Joan Parkes Gynecological Cancer Research Fund

Joe's Team Fund for Translational Research
 John and Myrna Daniels Endocrine Research Fund
 John and Nina Cassils Fund
 John Finlay Oncology Fund
 John Fortney Party Fund
 John L. Hickey Fund
 John Steinberg Fund
 Judy and Wilmot Matthews Health Services Research Fund
 Karen Meltzer Lectureship Fund
 Karen Morton Fund
 The Kelly Silverstein Fellowship Fund
 Kidney Cancer Research Network of Canada Fund
 The KY Ho and Family Tumour Imaging Innovation Fund
 Larry Haughton Pancreatic Cancer Research Fund
 The Laura S. Rocca Fund
 Lee Greenspoon Gastrointestinal Cancer Research Fund
 Libby and Michael Goldgrub Gynecological Cancer Research Fund - Radiation
 Lily Silver Magic Castle Fund
 Linda and Marvin Barnett Fund
 Lisbeth Moore Leukemia Fund
 The Lo Family Fund for Leukemia Research
 Lusi Wong Lung Cancer Early Detection Research Fund
 Lynn Douglas Fund
 Lynne Kagan Fund
 The Lyon Share Contribution Fund
 MacDonald Stomach Cancer Research Fund
 MacFeeters Hamilton Centre for Neuro-Oncology Research Fund
 Marie Thompson Fund
 Marilyn Green Melanoma Research Fund
 Marilyn Ricci Cancer Pain Control Fund
 Marty Kelman and Gilda Tanz Fund
 Marvin and Linda Barnett Leukemia Fund
 Marvin Arbuick Esophageal Cancer Research Fund
 Marvin and Linda Barnett Leukemia Fund
 Max Tanenbaum Garden Fund

McCain Fund
 McCain GU Biobank Fund
 Melvyn Paul Rubinoff Melanoma Research Fund
 Menkes Family Innovation Fund in Thoracic Surgical Oncology
 Merck NDD Fellowship Fund
 Michael Albert Garron Fund
 Michael J. Dickinson Endoscopic Equipment Fund
 Michael Ryan Leal Fund
 Michael Wise Memorial Fund
 The Michele Temple Melanoma Research Fund
 Most Wanted Fund
 Motorcycle Ride for DAD Fund
 Muzzo Family Minimally Invasive Surgical Oncology Program Fund
 Muzzo Family Robotics Program Fund
 Nadi Meir Fund
 The Nadir and Shabin Mohamed Foundation Fund
 National Pancreatic Cancer Canada Foundation Fund
 The Nicole Nardi Fund
 Niki Bledin Ovarian Cancer Fund
 Nita and Donald Reed Adaptive Therapy Fund
 Nora Rudnick Ovarian Cancer Research Fund
 The Norman and Marian Robertson Charitable Head and Neck Surgical Clinical Trials Program Fund
 Ophthalmology Leslie Estate Fund
 Palliative Pacers Fund
 Pamela Mary Hosang Ovarian Cancer Research Fund
 Pat Nichols and Bob Tundermann Cancer Care Fund
 Patricia J. Myhal Pancreatic Cancer Research Fund
 Patrick Avison Memorial Fund
 Patrick Clifford Hodgson Small Bowel Cancer Research Fund
 Patrick Hodgson Family Research Fund
 Patrick Moore Leukemia Research Fund
 Paul and Doreen Sudolski Multiple Myeloma Research Fund
 Paul and Rhonda Krandel Fund
 Paul Finger Fund for International Fellowships in Ocular Oncology Education
 Paul Finger Fund for Ocular Oncology Bioinformatics

Pearl Banks Fellowship in Melanoma Research and Patient Care Fund
 Pencer Centre PFAC Fund
 Petersen/ Turofsky Head and Neck Supportive Care Fund
 Philip Mincer Fund
 The Philip Lavorgna Life Over Lymphoma Fund
 Philip Orsino Cell Therapy Translational Research Fund
 Posluns Family Fund
 Prevent Ovarian Cancer Program Fund
 Pusateri's Adult After Care Fund
 The RACH Fund
 Ralph Fisher Fund
 RAS Cancer Mutations Research Fund
 Rebecca's Hope Leukemia Research Fund
 Richard LeGresley Biliary Cancer Research Fund
 Robert and Andree Rheume Fitzhenry Brain Metastasis Fund
 Robert Buckman Fund
 Robert Elliott and Paul Wilson Pancreatic Cancer Research Fund
 Robert V. Brady Award Fund
 Robin and Barry Picov Family Breast Cancer Research Fund
 Roche Fellowship in Drug Development
 Roche Melanoma Pathology Fellow Fund
 Romeo DeGasperis and Lymphoma Canada Foundation Research Fund
 Ronald Buick Symposium Fund
 Ronna Winkler Non-Hodgkins Lymphoma Research Fund
 Sam Sniderman and Janet Mays Ovarian Cancer Fund
 Samuel Family Foundation CT/PET Centre Research Fund
 Samuel Levinson and David Family Fund
 Sandra Foyston Patient Education Fund
 Sara Ferlito Fund
 Serous Cancer Fund
 Shirley and Sidney Cohen Fund for CLL
 Shiu Pong Group Immunotherapy Fund
 Slight Family Foundation Fund
 Slavens Family Fund
 Spin 180 Ovarian Cancer Research Fund

The Stanley Tassis Prostate Cancer Breakthrough Research Fund
 Stephen Duviner Pancreatic Cancer Research Fund
 Steven Hoffman Fellowship in Molecular Genomics Expendable Fund
 Strobele Family Guided Therapeutics Research Fund
 Sue Bristow Leukemia Fund
 The Surgical Robotics-GTX 'Invest in Innovation' Research Fund
 Susan Armitage Medical Imaging Capital Purchase Fund
 Suzanne Kamel Reid Genetics Fund
 Tara Fund
 TD Collaboration and Recruitment Fund
 TD Watchman Trials Fund
 Tito and Maria Sansalone Fund
 TMDT Capital and Equipment Fund
 Toronto Downtown Immediate Breast Reconstruction Program Fund
 Toronto Ovarian Cancer Research Network Fund
 The Turack Family Fund
 Wallace and Margaret McCain Fund
 Warren-Connelly Palliative Care Development Fund
 The WB Family Foundation Research Fund
 The Weir Family Brain Cancer Research Fund
 Wendy Eisen - Celebration of Life Fund
 Wharton Fund for Head and Neck Cancer Research
 Wilson Sarcoma Research Fund
 Wittrock Prostate Cancer Research Fund
 Zarboni Fund
 The Zoe Springer Memorial Fund

Endowed Funds List

April 1, 2019 to March 31, 2020

Abate Radiation Therapy Prize Fund
 Abraham, Ethel and Jackie Richmond Research Fund
 Adele E.G. Curry Research Fund
 Al Hertz Family Foundation Fund
 Albert Edward Rostern Mesothelioma Research Fund
 Asaro Family Lymphoma Fellowship Fund
 Ask Ethel Fund
 Barbara Allen Ovarian Cancer Fund
 Barbara Sharpless Breast Cancer Research Fund
 Barrick Gold Corporation Prostate Research Fund
 Bartley Bull Clinical Research Fund
 Beatty Biological Research Fund
 Bergsagel Visiting Professorship Fund
 Bierstock Family Lectureship in Prostate Cancer
 BRAS Drug Development Program
 The Brian Steck Leukemia Research Fund
 Bulhoes Head and Neck Fund
 C. Victor Secrett Research Fund
 Carley Allison Head and Neck Surgery Lecture Fund
 Carolyn Budovitch Brain Tumour Research Endowment Fund
 Catherine M. Wanless Research Fund
 Charles Krowitz Endowment Fund for Burkitt's Lymphoma Research
 Cohen and Morrison Pathology Research Fund
 Dalia McKie Endowment Fund
 Deirdre Clement Research Fund
 Dong Luong Huynh Research Fund
 Donna Steinberg Lung Cancer Research Fund
 Dorothy Gordon Buck Endowment Fund
 Douglas Bryce Education and Research Fund
 Dr. Clifford Ash Lecture Fund
 Dr. Jane Poulson Breast Cancer Research Fund
 Dr. Joseph Neil Monteith Dunsmore Fund
 Drs. Vera Peters & R.S. Bush Chair in Radiation Medicine Fund
 Drs. Vera Peters & R.S. Bush Lectureship in Radiation Oncology Fund
 E.A. McCulloch Lectureship Fund
 Eckler Research Endowment Fund
 Edie and Eric Yolles Research Fund
 Edith Kirchmann Fellowship Fund
 Edward E. Wise Research Fund

Edward Futerman Leukemia Research Fund
 Eleanor and Burnett Thall Research Fund
 Elizabeth Duke Research Fund
 Elizabeth M. Francis Fund
 Elma Pearl Pinder Research Fund
 Enid Hildebrand Cancer Research Fund
 Ernest A. and Evelyn C. Byworth Trust for Research Fund
 Fielding Family Research Fund
 Florence Winberg Endowment Fund
 Freda Ariella Muscovitch Ovarian Cancer Research Fund
 Fritz Spiess Research Award Fund
 Gail Eisen Pancreatic Cancer Research Fund
 George and Kathleen Vice Research Fund
 George Knudson Memorial Fellowship Fund
 Gerald and Sheila Hatch Fellowship Fund
 The Gerald Kirsh Humanitarian Award Fund
 Gerry and Nancy Pencer Brain Tumor Centre Endowment Fund
 Gibson Clinical Research Fund
 Girling/MacLellan Research Fund
 Gladys M. Davis Patient Services Fund
 Glenn and Marilyn Hunnings Fund in Haemopoiesis/Lymphopoiesis Research
 Guthrie Family Fund
 Gwendolyn H. Riding Research Fund
 Harley Ulster and Cindy Leder Multiple Myeloma Fund
 Harold E. Johns Research Prize Fund
 Harold E. Yeo Research Fund
 Harry and Eleanor O'Neill Research Fund
 The Harry and Joyce Gibbard Cancer Research Fund
 Helen M. Cooke Professorship Fund
 Helen V. Crawford Research Fund
 Helena Lam Fellowship in Cancer Research Fund
 The Hibiscus Fund for Hope
 Honourable Willard Z. Estey Fund
 Hubert B. Sceats Research Fund
 Ian Tannock Fellowship Fund
 Jane and Peter Eby Fund
 JCB Grant Cancer Research Fund
 Jean E. McCulloch Research Fund
 Jean E. Smith Research Fund
 Jeremy A. Oliver Palliative Care Endowment Fund

Joanna Lai Fund
 John and Esther Loewen Family Fund
 John L. Hickey Endowment Fund
 John Purkis Fund for Lung Cancer Research
 Joseph Lorne Garvin Research Fund
 Joseph Robert Russell Research Fund
 Junior League of Toronto Pediatric Radiation Fund
 Katharine S. McLeod Research Fund
 Khurshed Sanjana Multiple Myeloma Research Fund
 Lee K. and Margaret Lau Breast Cancer Research Fund
 Leslie Zeev Mozes Fund
 Lyndsay, Joey and Sam Lyons Fund
 Lynn King Palliative Care Fund
 M. Ann MacMillan Research Fund
 Margaret Mary Vivian Endowment Fund
 Margaret Pollard Research Fund
 Marion H. McRobert Research Fund
 Marion Margaret McCormick Endometrial Cancer Research Fund
 The Mary and Garth MacGirr Cancer Research Fund
 Mary C. Conway Research Fund
 Mary Pawlyk Fund for Research into Lung Cancer
 Max Tanenbaum Music Program Fund
 McDowell-Silcox Family Research Fund
 Melissa Ann Katzman Cancer Research Fund
 Michael Kamin Hart Adolescent and Young Adult Program Fund
 Michael V. and Wanda Plachta Fellowship Fund
 Mildred Eady Research Fund
 Mildred Goldberg Fellowship Fund
 Mindy Kirsh Bridge to the Cure Endowment Fund
 Monica Wright Roberts National Breast Cancer Endowment Fund
 Morris and Marcia Kwinter Fund
 Morrissey-Copping Palliative Care Endowment Fund
 N. B. Keevil Fellowship in Translational Research Fund
 Nizar and Gulzar Kanji Fund
 Norman Latowsky Leukemia Fund
 Oberlander Fellowship in Lung Cancer Research
 Pak Heng Chu Research Fund
 Paola Colozza Fund for Drug Discovery
 Pearl Banks Family Endowment in

Melanoma Research and Patient Care Fund
 Pencer Centre Patient and Family Advisory Committee Fund
 Philip and Terry Browman Ovarian Cancer Research Fund
 Philip Lavorgna Life Over Lymphoma Endowment Fund
 Philip Torno Cancer Research Endowment Fund
 Philippa Harris Annual Lecture Fund
 Phyllis Hantho Breast Cancer Fund
 Phyllis Smith Nursing Education Fund
 The Rabbi Joseph and Doris Kanner Fund
 Reid-Weston Family Leukemia Research Fund
 Richard H. Grimm Lectureship in Head & Neck Oncology Fund
 Robert G. Matthews Cancer Research and Education Fund
 Robert Visagie Bone Marrow Transplant Fund
 Roy Arthur Fawcett Cancer Research Fund
 Ryder MacDougall Family Fund
 Shawn's Miracle Fund
 Shiraz Bagli Memorial Fund for Basic Research in Ovarian Cancer
 Shirley Mak Breast Cancer Research Fund
 Spooner Family Endowment Fund
 Steven Hoffman Fellowship in Molecular Genomics Fund
 Stevens/Peters/Bush/Fellowship in Radiation Medicine Fund
 Susan E. Crerer Ovarian Cancer Early Detection Fund
 Sylvia and Louis Lockshin Patient Education Program Fund
 Sylvia Jaychuk Pancreatic Cancer Research Fund
 TD Fund for Medical Discovery
 Teddy Orenstein Research Fund
 Tehmi Boman Shroff Fund in Multiple Myeloma Research
 Terry Watson Research Fund
 Tony Pennella Fund
 Val Trypuc Sarcoma Research Fund
 Valerie Dickson Fund
 Vera McDermott Patient Education Fund
 W.J. Collins and J.A. McNab Research Fund
 Walter B. Pape Fund
 Wharton Lectureship in Head and Neck Cancer Fund
 William and Dorothy Drevnig and Family Ovarian Cancer Research Fund

Special Events

April 1, 2019 to March 31, 2020

\$1,000,000+

Journey to Conquer Cancer Run or Walk

\$250,000 - \$999,999

Agnico Eagle Charity Golf Day
 Drive for Excellence Charity Golf Tournament - Presented by Camrost Felcorp
 Fight To End Cancer
 Margaret + George Do La Dolce Vita Multiple Myeloma M-Moving Together Toward The Cure (MM5k)
 Northern Pass Bike Ride
 The Michelangelo Cup

\$100,000-\$249,999

Hearts for Hart Golf Day in Memory of Michael Hart
 Taylor Cup Pond Hockey Championship
 Yoga to Conquer Cancer

\$50,000 - \$99,999

Fiesta das Amigas/Circle of Friends
 Friends for Life Gala
 Head For A Cure
 Menkes Charity Golf Tournament
 Ride for Myriam
 SCRF Tee-Up Against Cancer
 The Gerry & Nancy Pencer Centre Events
 The Silstar Foundation - Walk in the Woods
 We are Warriors

\$25,000 - \$49,999

A Cure in the Future Retro Gala
 EXACT Yorkville Run
 IAHSS Ontario Chapter Golf Tournament
 Kathy Morrison Memorial Golf Tournament
 Pink Ribbon Event
 Race Roster Spring Run Off
 Rebecca's Hope Parrish & Heimbecker Golf
 ScotiaBank Toronto Waterfront Marathon
 Toronto Marathon

Up to \$24,999

Adam Coules Tribute
 An Evening With Jane Lockhart
 Arnie Abramowitz Charity Golf Tournament
 B1 Dri Ride to Crush Cancer
 Beans for Brain Cancer
 Blue Epaulette Program
 Bras Family Events
 B-Strong Walk - In Memory of Lindsay Bolger
 Buzz 4 Brain Cancer
 Canadian Computer Charity Golf Classic
 Capotosto Family Fundraiser
 Celestial Gala
 Cheryl's Hope Golf Tournament
 Clarry for Captain
 Crop for the Cure
 Cuts for Cancer

DaCosta Family Charity Golf
 Daniela Del Rosso Events
 Dan's Backyard BBQ Sheehan Family
 David Dundas Golf
 Delta Pi Sorority Ribbons & Roses Charity Auction
 Donate A Car
 Double Birthday Celebration/Cancer Benefit
 Ducato dei Vini Friulani Ceremonial Dinner
 Energy Dance Arts
 Fern Hill School - Crazy Tie Day
 For Always Ovarian Campaign
 Freed Charity Golf Classic
 Funding Innovation Easel Program
 Fundraising for Cancer Research - Beena Tanga
 Garage Sale for Esophageal Research
 Grands and Company Event
 Groove Vitality
 Hiit The Six
 Hobbs Family Annual Cottage Classic Golf
 Holiday Inn Downtown
 Julia Robertson Fundraiser
 Julius Grodski's Kilamanjaro Climb
 Kelly's Fighting Chance Golf Classic
 Liisa McBride Memorial Golf Tournament
 Marisa Memorial Golf Tournament
 Mark Howard Grand Concert
 Menin Street Fair

Men's Health Charity Golf Tournament
 Mikey Plobner Memorial Golf Tournament
 Mincraiser Event in Memory of Alex Minc
 Mississauga Marathon
 Muckhorse Golf Charity Classic
 My Sock Box
 Myodetox Performance Fitness Fundraiser
 Newton Grove Michele Temple Walk
 Night Owl Band Fundraiser
 Ontario Student Leadership Conference
 Palmer Bros. Charity Golf Tournament
 Pink Epaulette Program
 Post Up for a Cure - George Brown
 Ratech Golf Tournament
 Reebok Ragner Niagara
 Ribbon of Hope - Freda Lochhead
 RWI Pink City Classic Basketball
 Spin Shannanigans
 SPIN to Conquer Cancer
 SPINCO Spin-It-Forward
 Swing Fore Cancer
 The Canso Charity Golf Challenge
 The Sarah Curia Annual Picnic for Life
 Think Pink
 Toronto Fire Fighter Calendar
 Toronto Firefighters Pink Campaign

Supplier List

April 1, 2019 to March 31, 2020

102.1 the Edge
365 Productions
680 News
98.1 CHFI
99.9 Virgin Radio
A1 Chinese Radio
Abcon 2001 Inc.
Able Travel
Accenture
Adidas Golf
Advanced Tent Rental
Aecon
Affair Tent & Event Rentals
Air Canada
AKA Media
Allied
Altis Human Resources
Amgen
Aramark Canada
Audi Uptown Markham
B Yoga
Barberians Steak House
Barreworks
Battlefield
BBQ Gourmet
Beanfield
Beauty on the Grind Boutique
Beck Taxi
Bell Media
Best Buy
Bicycling Magazine
Bioraw
BioSteel
Blackbaud
Blacksmith Cycle
Bliss Photography
Bloombergsen Investment Partners
Blue North Strategies Inc.
BMO Financial Group
BOOM 97.3

Boss Promotions
Branksome Hall
Brettler Mintz Foundation
Brinks Canada Ltd.
Calvin Klein
Campagnolo Pure
Canada Post Corporation
Canadian College of Massage and Hydrotherapy
Canadian Cycling Magazine
Canadian Rocks
Canali
Cardinal Couriers
CBC
Celgene
CFRB NEWSTALK 1010
Chair-man Mills Corp.
Chantler's Environmental Service
Chris King
CHUM 104.5 FM
CIBC
CityTV
Clif Bar & Company
Coca-Cola
Colio Estate Wines/Girls Night Out Wines
Cono Sur Vineyards & Winery
Coppinwood Golf Club
Corus Radio
Coventry North
CP24
Crayola LLC
Crowe Soberman
CTV
Cyclebar
Dairy Farmers of Canada
Dark Horse
Deloitte LLP
Delta
Deluge Water

Digital Attractions
Dilawri
Discount Car & Truck Rentals
Don Fry Scaffold
Dotmar Fitness
Downtown Porsche
Dragon Security
Dyversity Communications
EastDell Estate Winery
Elle Fitness
Enbridge
Entripu
Ermenegildo Zegna
Eton of Sweden
EXTEND-IT
EZNet
Fabricland
Fairchild Group
Ferragamo
Ferrari Maserati of Ontario
Fiesta Rentals
Filmgreens
Filtra
Flow Water
Frozen Pond
G4S Secure Solutions (Canada) Ltd.
Game+ TV
Ganz
Garage Living
Gatorade
Gee Beauty
Genesis Cycle
George C. Toronto
Gervais Party and Tent Rentals
Giorgio Armani
Global Television Network
Glow Academy
Gluckstein
GoodLife Fitness
Granite Golf Club

Gravitate Fitness
Greenpark Homes
Hailey's Hair Elastics
Halfmoon
Harmony Fitness
Harvey Kalles Real Estate Brokerage Inc.
HCB Communications
Hearty Catering
Henry's
Hero Burgers
Hershey Canada Inc.
Highland Chevrolet
House & Home Media
Impact Canopies
Incredible Printing
Indian River Trading Company
Jackson-Triggs Winery
Janssen
Jet Entertainment
Jones Brown Insurance Broker
JSI Data Systems Ltd.
Karbon
Kellogg's
Kennedy Ford Sales
Kind Bars
Kit and Ace
Knix Wear
KPMG
Kula
L'Oreal
Laborers' International Union of North America (LIUNA)
Lacoste
Lärabar
La Roche-Posay
Liberty Grand
Life
Linwood Homes
LMNO

Loblaws
Longo's
m0851
Mackie Moving Systems
Maranello BMW
Marathon Donuts and Coffee
Marcoliani
Mattel
Mavic
McCarthy Tetrault
McDonald's
McWhirter & Associates
Mega Comfort
Mercedes-Benz Thornhill
Merit Travel
MFS
MiraTel Solutions Inc.
Moduloc Fencing
Moksha Yoga
Monster Energy Drink
Moosehead Breweries
Mosaic
Mosaic Yoga
Motor Home Travel
Multisport
Muskoka Boat Gallery
Muskoka Brewery
Myriad Group
Naked Creative
New Moon Kitchen
Newcap Radio
Newline Incentives
Niagara Parks Commission
No 22
Noble Estates Wines & Spirits
Norco Bicycles
Nourish Marketing
Nuun Hydration
Nuvango
Oakley

Oakville Infiniti Nissan
Office Coffee Solutions
OMNI Television
OverActive Media
Palettera
Paradise Homes
Pasha Turkish Restaurant
Pattison Outdoor Advertising
Paul & Shark
Paul's Move All
PCM Inc.
Pelmorex Media
PepsiCo
Performance
Peter Bregg Images
Pfaff Automotive Partners
PGA of Ontario
Pizza Pizza Ltd.
Porter Airlines
Postmedia Network
PricewaterhouseCoopers
PSI Payroll Service Inc.
Pür
Purple Lotus
Q107
Quad Fitness
RedOaks Mgt. Consulting
Rexall
Rocket Fitness
Rogers Communications Inc.
Rose Reisman Catering
Royal Bank of Canada
Royal de Versailles
Ryder
RYU
S.O. Asher Consultants
Samuelsohn
Samyoga
Sawdust City Brewing Company
Saxx Underwear

Schneider Electric
Score Media and Gaming Inc.
Scotiabank
Seagate
Sharp Point Data Ltd.
Shibley Righton LLP
Shirt Fit
Skylar Media
Slavens & Associates Real Estate Inc.
Sobeys
Solepower Productions
Splendid Table
Sporting Life
St. Joseph Communications
Starbucks
Starlight Investments Inc.
Steam Whistle Brewery
Stewart's Baskets and Balloons
SUGOI
Sun Zone
Sutherland Chan
Suzy Shier
System 4 Productions
Taboo Muskoka
Tapology Inc.
TaylorMade Golf
Telelatino Network Inc.
The Aber Group
the BBQ Gourmet
The Coffee Lab
The Dock 104.1 FM
The Globe and Mail
The Pickle Barrel
The Printing House
The Quiet Company
The Source
The Toronto Star
The Travel Network
The Weather Network

The Yoga Sanctuary
The Yoga Weekend
Thentix
Tip Top Tailors
Tonica Kombucha
Toronto Bicycling Network
Toronto Digital Imaging
Toronto Life
Tour East Group
Trade Secrets
Trillium College
TSN Radio
Twist Gallery
Twisted Inflatons Balloon Artistry
Under Armour, Inc
Upper Crust
Valassis Canada Inc.
Vanek Whisky Events
Vonality
Well to Do
Westdale Properties
Whole Foods Market
Winnwell Clean Hockey
Woodbine Entertainment Group
Xplornet Communications Inc.
Yoga Tree
Zoomer Media Limited
Zoosmobile

To learn more visit thepmcf.ca

The Princess Margaret
Cancer Foundation  **UHN**

Office/Courier Address:

700 University Avenue,
4th Floor, Toronto, ON M5G 1Z5
T: 416.946.6560 / 1.866.224.6560
F: 416.946.6563

Mailing Address:

610 University Avenue,
Toronto, ON M5G 2M9

Follow or Like us
on social media:     

Charitable Organization No. 88900 7597 RR0001